

# MSU ALUMNI

MSU ALUMNI MAGAZINE • SUMMER 2014  
FOR ALUMNI AND FRIENDS OF MICHIGAN STATE UNIVERSITY



OH,  
**THE PLACES**  
WE GO! →





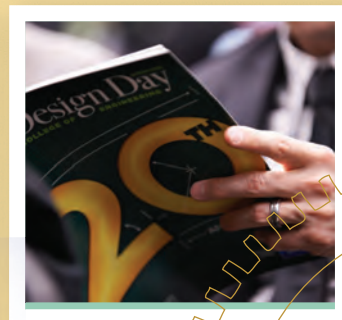
## 14 OH, THE PLACES WE GO!

Enjoy a vicarious adventure with Spartan travelers whose photographs capture cultural touchstones from Brazil to Saudi Arabia, Bolivia to Nepal and several European destinations in between.



## 28 THE ROAD LESS TRAVELED

Meet three Spartan undergraduates who are tapping into the university's vast and varied opportunities to create their own paths of extreme personalization.



## 40 ENGINEERING STUDENT SUCCESS BY DESIGN

MSU students have been turning heads in the engineering world since 1994. See what they created last spring.

### DEPARTMENTS

President's Message 3

In Basket 5

Around Circle Drive 6

Sports 46

Alma Matters 54

State's Stars 58

Obituaries 62

Lasting Impressions 72

*Can't get enough of all things Spartan?*  
**GET CONNECTED!**

Follow us on Facebook,  
Twitter and other social media.

Visit [www.alumni.msu.edu](http://www.alumni.msu.edu)





# MSU ALUMNI



2 | Summer 2014 | [alumni.msu.edu](http://alumni.msu.edu)

## Magazine Staff

### *Editor*

Paula M. Davenport

### *Publication Design Coordinator*

Dave Giordan

### *Copy Editors*

Linda Dunn

Lois Furry

Chris Schaffer

### *Advertising Manager*

Peter DeLong

Advertising (517) 355-8314

[delongpe@msu.edu](mailto:delongpe@msu.edu)

## To Reach the Editor

*Editor, MSU Alumni Magazine*

*Spartan Way*

*535 Chestnut Rd., Room 300*

*East Lansing, MI 48824*

*Via email:*

*[daven125@msu.edu](mailto:daven125@msu.edu)*

COPYRIGHT 2014

MSU ALUMNI ASSOCIATION

University Advancement

MSU Alumni Association

Spartan Way

535 Chestnut Rd., Room 300

East Lansing, MI 48824

(517) 355-8314

[alumni.msu.edu](http://alumni.msu.edu)

*MSU is an affirmative-action,  
equal-opportunity employer.*

*"The Colors of Life"*

*Dayna Valent*

*ISP Global Focus Photo Contest*

*Student Honorable Mention*







## PRESIDENT'S MESSAGE



Members of Michigan State University's 153rd graduating class have now joined the ranks of a worldwide Spartan alumni network more than 500,000 strong. Some will pursue advanced degrees, and most will embark on careers. I'm confident that this new generation of Spartans will be welcomed and that they are positioned for success.

I often have opportunities to talk with business people, legislators, parents and others about what today's graduates need to succeed and what we at MSU are doing to prepare them for a world that is different than the one in which most alumni came of age.

Many of the world's top employers look to MSU for talent. One way we know what employers are seeking is the annual survey from MSU's College Employment Research Institute (CERI). Armed with feedback from the employer community, CERI is an advocate for redefining what skills a prepared graduate should possess.

As always, college graduates must be deeply steeped in their major disciplines, and they need the work ethic for which Spartans are known. But more than ever, graduates also need to be able to move confidently in a world in which collaboration, critical thinking, creativity, global awareness, and an appreciation of diversity are not only valued but essential to success.

Experts in the information technology industry were the first to characterize this as "T-shaped talent," in which the vertical bar represents deep specialized knowledge and the horizontal bar represents the kinds of skills that pave the way for effectively applying expertise.

So how do we instill these T-shaped attributes? One way is to provide students with high-impact learning experiences that require them to solve real-world problems. Study abroad is one way MSU provides such experiences, and we're a national leader. Research is another way. At MSU, each year about 10,000 undergraduates work side by side with faculty on research projects.

Then there are service-learning opportunities, which now involve some 21,000 students annually. We also stress interdisciplinary studies, another hallmark of T-shaped thinking. Our entrepreneurship programs are yet another example, as we tap students' passion for innovation and the opportunity to establish careers on their own terms.

While these kinds of experiences have long been part of the MSU student experience, we're approaching development of T-shaped talent with greater intention across curricular and co-curricular programs.

What do students who have taken full advantage of these kinds of MSU experiences and resources look like? You'll meet some of them in this issue of the magazine. The students featured in this year's *President's Report* are making the most of opportunities to customize their undergraduate experiences. Titled *Inside Out*, the online report includes videos and a documentary that take an in-depth look at the Spartan student experience. I encourage you to explore it at [msu.edu/insideout](http://msu.edu/insideout).

Others at MSU who exhibit T-shaped attributes include many of our engineering students who presented practical projects at MSU's Design Day and those who take it a step further by forming entrepreneurial teams and pitching their business plans at competitive local and national events. This spring one of our student teams was awarded \$100,000 from the U.S. Department of Energy for a business plan founded on MSU technology.

The last few months have included milestones in many areas of endeavor at Michigan State, including the groundbreaking for the Facility for Rare Isotope Beams and continued top rankings for a number of our academic programs. Let's also count our most recent Spartan graduates among those success stories. Spartans Will.

A handwritten signature in black ink, reading "Lou Anna K. Simon".

Lou Anna K. Simon, PhD  
President, Michigan State University









## Magazine Staff

*Editor*  
Paula M. Davenport

*Publication Design Coordinator*  
Dave Giordan

*Copy Editors*  
Linda Dunn  
Lois Furry  
Chris Schaffer

*Advertising Manager*  
Peter DeLong  
Advertising (517) 355-8314  
delongpe@msu.edu

## To Reach the Editor

*Editor, MSU Alumni Magazine*  
*Spartan Way*  
535 Chestnut Rd., Room 300  
East Lansing, MI 48824

*Via email:*  
daven125@msu.edu

COPYRIGHT 2014  
MSU ALUMNI ASSOCIATION

University Advancement  
MSU Alumni Association  
Spartan Way  
535 Chestnut Rd., Room 300  
East Lansing, MI 48824  
(517) 355-8314  
alumni.msu.edu

*MSU is an affirmative-action,  
equal-opportunity employer.*

*"The Colors of Life"*  
Dayna Valent  
ISP Global Focus Photo Contest  
Student Honorable Mention



## PRESIDENT'S MESSAGE



Members of Michigan State University's 153rd graduating class have now joined the ranks of a worldwide Spartan alumni network more than 500,000 strong. Some will pursue advanced degrees, and most will embark on careers. I'm confident that this new generation of Spartans will be welcomed and that they are positioned for success.

I often have opportunities to talk with business people, legislators, parents and others about what today's graduates need to succeed and what we at MSU are doing to prepare them for a world that is different than the one in which most alumni came of age.

Many of the world's top employers look to MSU for talent. One way we know what employers are seeking is the annual survey from MSU's College Employment Research Institute (CERI). Armed with feedback from the employer community, CERI is an advocate for redefining what skills a prepared graduate should possess.

As always, college graduates must be deeply steeped in their major disciplines, and they need the work ethic for which Spartans are known. But more than ever, graduates also need to be able to move confidently in a world in which collaboration, critical thinking, creativity, global awareness, and an appreciation of diversity are not only valued but essential to success.

Experts in the information technology industry were the first to characterize this as "T-shaped talent," in which the vertical bar represents deep specialized knowledge and the horizontal bar represents the kinds of skills that pave the way for effectively applying expertise.

So how do we instill these T-shaped attributes? One way is to provide students with high-impact learning experiences that require them to solve real-world problems. Study abroad is one way MSU provides such experiences, and we're a national leader. Research is another way. At MSU, each year about 10,000 undergraduates work side by side with faculty on research projects.

Then there are service-learning opportunities, which now involve some 21,000 students annually. We also stress interdisciplinary studies, another hallmark of T-shaped thinking. Our entrepreneurship programs are yet another example, as we tap students' passion for innovation and the opportunity to establish careers on their own terms.

While these kinds of experiences have long been part of the MSU student experience, we're approaching development of T-shaped talent with greater intention across curricular and co-curricular programs.

What do students who have taken full advantage of these kinds of MSU experiences and resources look like? You'll meet some of them in this issue of the magazine. The students featured in this year's *President's Report* are making the most of opportunities to customize their undergraduate experiences. Titled *Inside Out*, the online report includes videos and a documentary that take an in-depth look at the Spartan student experience. I encourage you to explore it at [msu.edu/insideout](http://msu.edu/insideout).

Others at MSU who exhibit T-shaped attributes include many of our engineering students who presented practical projects at MSU's Design Day and those who take it a step further by forming entrepreneurial teams and pitching their business plans at competitive local and national events. This spring one of our student teams was awarded \$100,000 from the U.S. Department of Energy for a business plan founded on MSU technology.

The last few months have included milestones in many areas of endeavor at Michigan State, including the groundbreaking for the Facility for Rare Isotope Beams and continued top rankings for a number of our academic programs. Let's also count our most recent Spartan graduates among those success stories. Spartans Will.

Lou Anna K. Simon, PhD  
President, Michigan State University





## DIRECTOR'S MESSAGE



### HOW THINGS HAVE CHANGED!

That's the common exclamation I hear when alumni return to the banks of the Red Cedar River. They marvel at reinvented residential dining experiences that are the alchemy of culinary magic, customer focus and artful architecture. They study the ever-evolving Facility for Rare Isotope Beams that

is taking shape west of the Wharton Center, contemplating breakthrough discoveries at the confluence of art and science. They survey the new student-athlete facilities at the north end zone of Spartan Stadium, a testament to Mark Hollis' vision of an elite program that seeks to develop the mind in parallel with the body. And they listen, in awe, as today's undergraduates tell stories of participating in world-class research around the globe. Our Spartans are applying their knowledge everywhere and are truly transforming lives.

At the same time, alumni reflect on what hasn't changed at MSU. The majesty of Beaumont Tower, the thundering roar of the Izzone and our unquenchable desire to feed the world, generate new sources of intellectual and mechanical energy, and learn how sustainability and resilience go hand in hand.

This is the essence of the Spartan Spirit. It inspired alumnus John Shinsky to ride a bicycle 2,000 miles to help make his dream of building an orphanage in Matamoros, Mexico, come true. It motivates rising senior Jolisa Brooks to leverage her overseas study experience in Madagascar to drive revitalization efforts in her hometown of Detroit. And it's at the heart of the commitment that Spartan teachers like Ellen Closs have made to help the next generation see more clearly, care more deeply and engage more directly to address our most pressing problems.

Yes, much is changing at MSU. But one thing hasn't changed. The land-grant values that first created our beloved institution endure. We remain dedicated to the proposition that the most satisfying aspect of the Spartan life is being able to make it possible for others to share in our bounty and enjoy more rewarding lives.

This is the firm foundation that nourishes Spartans Will. Today, tomorrow and always.

W. Scott Westerman, III, '78  
Executive Director, MSU Alumni Association





## IN BASKET

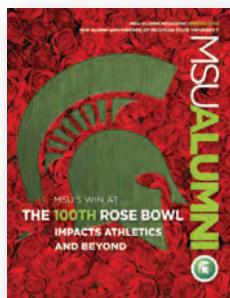
### BUCKET LIST

Thank you for keeping all alumni who contribute to and receive the fantastic *MSU Alumni Magazine* informed. The 2014 spring issue was very much appreciated. I had a most rewarding experience in Pasadena. The Rose Bowl article was the final frosting on my "bucket list."

Having finished at MSU in horticulture in 1968, I did an internship in Ypsilanti at Durant's Flowers, married a wholesale hard goods salesman, moved to Toledo, Ohio, and opened a retail flower shop in 1982 with my husband. I sold the shop in 2004. My husband passed away in 2005 and life goes on.

Just prior to the MSU/OSU football game I received a call from a former employee, Patricia Duggan. She works for FTD, the online floral service. She asked me to join her and FTD at the Rose Bowl as a volunteer. I said "yes" – it was a win-win.

And win we did! How proud I was watching the Spartan's perform. At 67 and living in Ohio for more than 40 years, I'm still a Michigan girl whose blood



runs green and white and PURE Michigan.

Go Green!

*Jean M. (Heddins) Emery, '68  
Perrysburg, OH*

### JEWISH STUDIES PROGRAM

I read the article in the 2014 spring issue of the *MSU Alumni Magazine* on the *Renaissance of Jewish Studies at MSU* with great pride. I thank you for sending me a copy and your kind letter. Michigan State and the MSU Jewish Studies program have been my passion for most of my adult life. I am very proud of

what has been accomplished at MSU in all areas and especially with the Jewish Studies program.

You did a great job on the article. How pleasing it was to be featured right after the Rose Bowl article.

*Michael B. Serling '66, JD '70  
Birmingham*

*(Correction: A story on "The Renaissance of Jewish Studies at MSU," published in our spring 2014 issue, contained an error. MSU recently held its 22nd Rabin Lecture, not its 21st.)*



### DREAM COME TRUE

In 1955, Betty Lou Lundstedt, 20, was among a half-dozen women on the cheer squad of Michigan State College. Imagine her excitement when State landed a berth in the 1956 Rose Bowl. She dreamed of appearing in the parade and cheering on her Spartans from the stadium's sidelines.

But something even more important cropped up. Her fiancé, Tom Cunningham, a young MSU alumnus who was in a pilot-training program, was granted a short leave over New Year's Eve

and New Year's Day to tie the knot.

Of course the wedding took precedence. Over the next 58 years, Mary Lou reminded Tom that she gave up her only Rose Bowl bid for him.

Fast forward to New Year's Day 2014. Mary Lou finally made it to the Rose Bowl. Joining her were her son Mark, a Stanford alumnus, and his wife Lisa. All were Spartans for a day.

It was Betty Lou's dream come true.

*Thomas F. Cummings '55, '59  
Westport, CT*

### MSU Alumni Association National Board Members

#### EXECUTIVE BOARD

##### President

Veronica O'Connor

##### Vice President

Kelley Wall

##### 2nd Vice President

Jeff Hicks

##### Secretary

Tom Benner

##### Immediate Past President

Bob Pawelski

##### Executive Director

Scott Westerman

#### BOARD MEMBERS

Henry Balanon

Bob Benenson

Laura Casey

Courtney Cawley

April Clobes

Ellen Closs

Clint Crook

Bill Featherstone

Megan Gebhart

Bruce Herman

Kelly Holdcraft

Bonnie Knutson

Jake Lestan

Richard Lewis

Alex Lozada

Gary Mescher

MaryLou Moore

Erika Myers

Don Patten

Steve Rothwell

Ryan Schram

Brett Sinta

Jeff Smith

Kelly Steffen

Rich Sternberg

Derek Wallbank

Betsy Weber

Rich Whipple

Stephen Wong

*As of January 1, 2014*



## AROUND CIRCLE DRIVE



*Azim Premji, left, and Reeta Roy, right, exemplify the forces of education and philanthropy. They joined President Lou Anna K. Simon at spring commencement.*

### COMMENCEMENT SPEAKERS EMBODY MSU PARTNERSHIPS

In South Africa, the philosophy of “ubuntu” roughly translates as “a belief in a universal bond of sharing that connects all

humanity.”

This concept was perhaps personified by two of our spring commencement guests: Indian-born Azim Premji, chairman of the prosperous software company Wipro Ltd. and a generous

education philanthropist, and Reeta Roy, president and CEO of The MasterCard Foundation, which is bringing Sub-Saharan African students to MSU to receive leadership training, land internships and earn college

degrees that are not available in their native countries.

Premji and Roy deeply understand how MSU’s work around the world amplifies efforts to improve the lives of future generations both here and abroad.

MSU President Lou Anna K. Simon’s spring address reaffirmed the university’s commitment to engaging with worldwide partners for the greater good.

“It is more important now than at any time in the university’s history to embrace our partnerships,” Simon says. “These linkages advance knowledge within our institution and underscore our responsibility to serve humanity. And just as importantly, they enrich our students’ cultural experiences and sensitivities to prepare them to tackle the problems of tomorrow.”



*Delve deeper into MSU’s connections with the Azim Premji Foundation at [go.msu.edu/premji](http://go.msu.edu/premji) and The MasterCard Foundation at [mcfscholars.isp.msu.edu](http://mcfscholars.isp.msu.edu).*

### FUELS BASED ON ALGAE

MSU scientists have invented a new technology that increases the odds of helping algae-based biofuels come closer to reality.

A recent article in *Algal Research* showcases the team’s invention of the environmental photobioreactor (ePBR), the world’s first standard algae growing platform.

The ePBR is a pond in a jar that helps identify, cultivate and test algal strains that have the potential to make the leap from lab to pond, proliferate in real-world settings and produce oil.

The ePBRs were the brainchild of David Kramer, Hannah Distinguished Professor of Biochemistry and Molecular Biology at MSU, whose lab could be mistaken for an electronics factory.

The potential of ePBRs has already inspired the launch of a company, Phenometrics, an MSU spinoff headquartered in Lansing. The company is merely two years old, but steady orders for the bioreactors have the company already running in the black.



*David Kramer, Hannah Distinguished Professor of Biochemistry and Molecular Biology.*



### 3-D FINGERPRINTS

MSU computer scientists have built the first three-dimensional model of a human fingerprint, which can lead to improvements in security.

Anil Jain and his MSU colleagues developed a method that maps a fingerprint image onto a 3-D finger surface—complete with ridges and valleys. Called a fingerprint “phantom,” it is made using a 3-D printer.

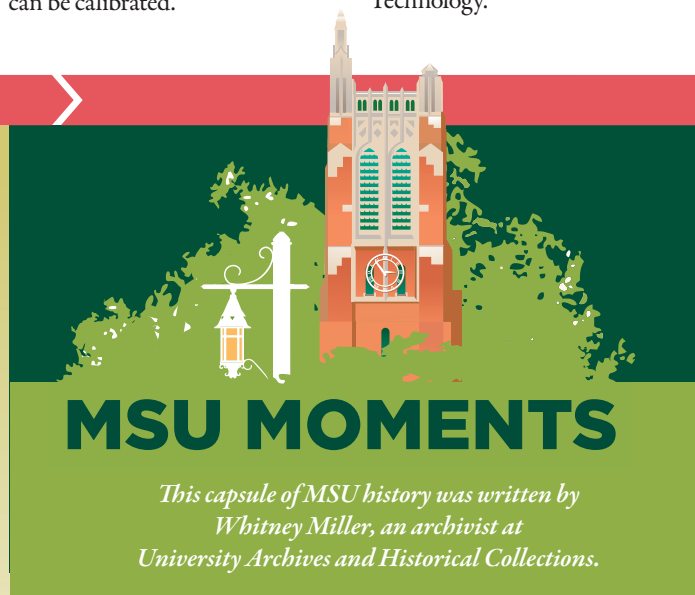
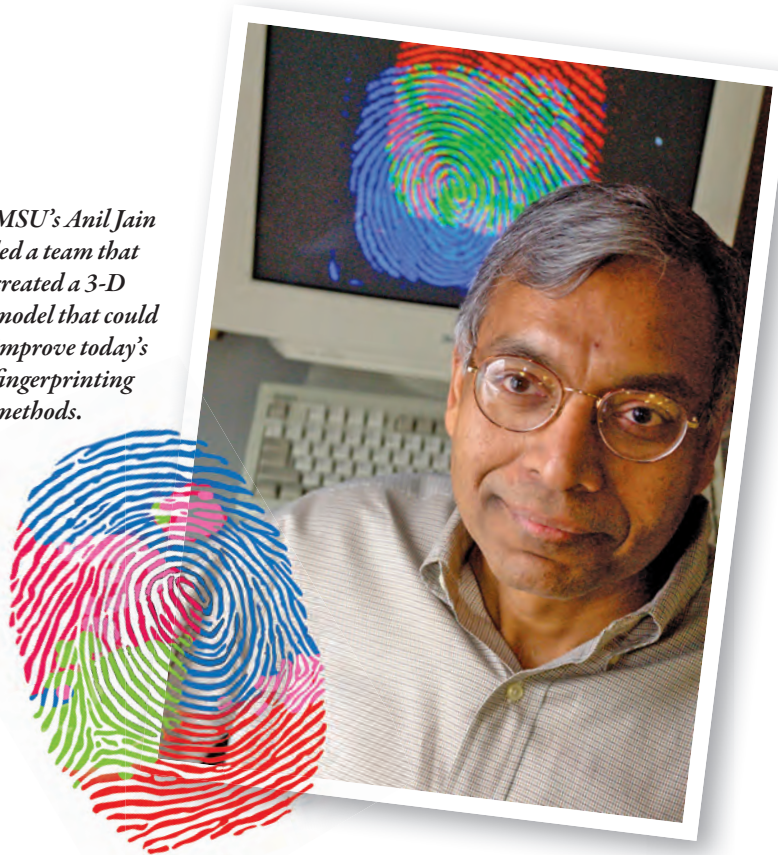
“In health care, a 3-D heart or kidney can be created,” Jain says. “Because the dimensions are known, they can be put into a scanner and the imaging system can be calibrated.”

In this case, the goal is to have a precise fingerprint model to match fingerprints via known properties and features.

“Tools like this would help improve the overall accuracy of fingerprint-matching systems, which eventually would lead to better security in applications ranging from law enforcement to mobile phone unlocks,” says Jain, a University Distinguished Professor of computer science and engineering.

Jain’s research is funded by a grant from the Measurement Science Program at the National Institute of Standards and Technology.

*MSU’s Anil Jain led a team that created a 3-D model that could improve today’s fingerprinting methods.*



The great influx of post-World-War II students to Michigan State necessitated a flurry of construction to accommodate a student population that nearly tripled between 1949 and 1969.

And over those two decades, rapid social changes resulted in a large portion of the student body becoming dissatisfied with traditional limitations of on-campus living.

MSU was quick to respond. It decided to combine living and learning under one roof. Its approach grew from the 1959 “Committee on the Future of the

University” report, which called for greater integration of student life with academic pursuits.

What resulted were nine, new ‘60s-era residence halls. All combined student living quarters and academics within their respective buildings. Case, MSU’s first co-ed dorm, along with Wilson, Wonders and Holden halls sprang from the south complex. McDonel, Akers, Fee, Holmes and Hubbard halls rose from the east complex.

All were built as hubs that encompassed classrooms, meeting

space, cafeterias and dormitory rooms.

Not long after, the concept was even further refined with the creation of residential colleges that housed classes and activities devoted to students with similar academic interests.

James Madison College in Case Hall opened to those studying social sciences. Lyman Briggs College in Holmes Hall housed students in the field of natural science.

This living-learning approach continues today in what are now

known as MSU neighborhoods. They occupy all but one of the inaugural facilities. Fee Hall has since been converted to space used by the university’s health team.

A third residential college, Justin Morrill (Arts & Letters), was attempted in the Snyder-Phillips dormitories, but was discontinued in 1979.

Today there are three degree-granting residential programs: James Madison College, Lyman Briggs College and the Residential College for the Arts and Humanities.

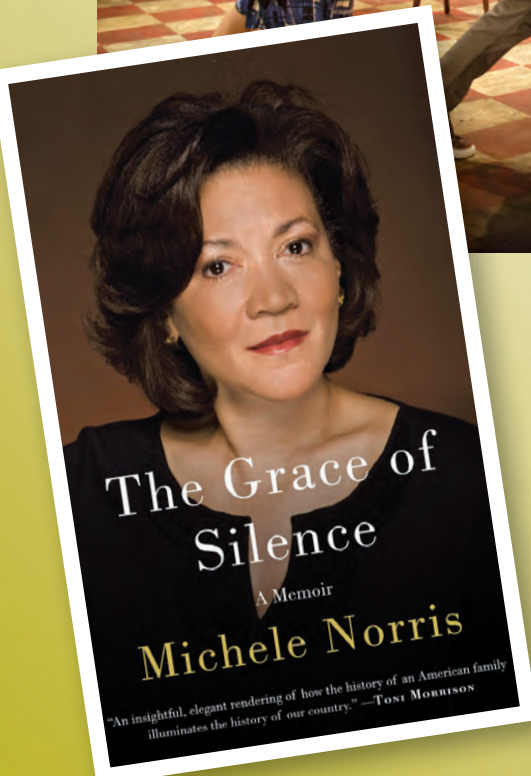
*Photo courtesy of University Archives & Historical Collections*







From the show *Once*



## WHARTON CENTER PROMISES STIRRING FALL SEASON

Wharton Center is gearing up for its next season with a spectacular lineup of Broadway hits, performances by renowned musicians and dancers, lectures by world thinkers and shows sure to delight families and children.

It all gets underway Sept. 15 when Michele Norris—one of the most respected voices in American journalism and an NPR correspondent—delivers her World View Lecture.

Norris recently won a Peabody Award for Excellence in Electronic Media for *The Race Card Project*, her initiative to foster a wider conversation about race in America. Her effort

blossomed from her family memoir, *The Grace of Silence*, released in 2010.

Her appearance coincides with the annual One Book, One Community program—co-sponsored by Michigan State University and the City of East Lansing—devoted to *The Grace of Silence*, this year's common read.

Kicking off October's Broadway favorites will be the musical *Once*, winner of eight Tony Awards and *Annie*, the world's best-loved musical, directed by original lyricist Martin Charnin.



For the full schedule of events and ticket information visit: [www.whartoncenter.com](http://www.whartoncenter.com).

## MSU EDUCATION IS NO. 1 FOR 20 YEARS

For the 20th consecutive year, *U.S. News & World Report* ranked MSU No. 1 in both elementary and secondary education on the graduate level.

MSU programs in the Top 5 of the magazine's 2015 edition of Best Graduate Schools range from nuclear physics (No. 1) to industrial/organizational psychology (No. 1) to supply chain/logistics (No. 2).

The continued dominance of education started in 1995. Donald E. Heller, dean of the College of Education, says the rankings reflect internationally respected faculty members and highly accomplished doctoral students who are helping transform K-12 education and teacher training through their research and classroom collaboration.

"The research conducted by our faculty and doctoral students is

recognized for the impact it is having on education not just here in Michigan, but beyond the state's borders and around the world," Heller says. "We are proud of this milestone, but even more proud of the work we are doing to improve teaching and learning at all levels."

All told, the College of Education had eight programs ranked in the top 10, including rehabilitation counseling (No. 2), curriculum/instruction (No. 4), higher education administration (No. 5), educational psychology (No. 6), administration/supervision (No. 7), and education policy (No. 10). *U.S. News & World Report* ranks MSU's education college No. 15.

Other high-ranking MSU programs include: African history (No. 3) and veterinary medicine (No. 9). The College of Osteopathic Medicine's primary care program was ranked at No. 9.





*From The God of Small Things*

## EXPAND YOUR WORLD VIEW

The Eli and Edythe Broad Art Museum on the MSU campus is exhibiting thought-provoking, larger-than-life installations along with traditional art work this summer. So escape the heat, thunderstorms or the doldrums to see:

### ***The God of Small Things*** by Imran Qureshi

The centerpiece of Qureshi's work fills a 30-foot high gallery. It's anything but small. It's a mountain of crumpled pieces of brown paper – all bearing images of a mural he previously painted on the New York Metropolitan Museum of Art – and now awash in what appears to be blood. A Pakistani artist, Qureshi says suicide bombings around the world have influenced his recent work. Large-scale paintings and book-like panels painted to mirror the Broad's architectural lines complete his exhibition. Ends Aug. 17.

### ***Border Unseen*** by Mithu Sen

The first solo U.S. museum exhibition by a New Delhi-based artist who stands as a crucial feminist voice in contemporary Indian art. Her impressive installation spans over 80-feet in length. Ends Aug. 31.

### ***Postscript: Writing After Conceptual Art***

This exhibition brings together the work of more than 50 artists and includes paintings, sculptures and installations, as well as works on paper that explore the ways we read, see, hear and process language. Ends Sept. 21.



*For more information on exhibitions and events visit:*  
[www.broadmuseum.msu.edu](http://www.broadmuseum.msu.edu).



## MSUAA IS HONORED BY ROTC

MSUAA Executive Director Scott Westerman (center) accepted the MSU Army ROTC Distinguished Support Award last spring from Lt. Col. Jeff McDonald (left) and Lt. Col. Bill Parker (right), directors of the Spartan Battalion. MSU alumni in the Washington, D.C. area host Spartan ROTC Cadets during the Battalion's annual participation in the Army's 10K race.





## Auto insurance as special as your alma mater.

Did you know that as a Michigan State alum, you could **save up to \$427.96 or more** on Liberty Mutual Auto Insurance?<sup>1</sup> You could save even more if you also insure your home with us. Plus, you'll receive quality coverage from a partner you can trust, with features and options that can include Accident Forgiveness<sup>2</sup>, New Car Replacement<sup>3</sup>, and Lifetime Repair Guarantee.<sup>4</sup>



**CONTACT  
US TODAY  
TO START  
SAVING**

877-751-2991

MENTION CLIENT # 6527

[LIBERTYMUTUAL.COM/MSUAA](http://LIBERTYMUTUAL.COM/MSUAA)

VISIT YOUR LOCAL OFFICE

This organization receives financial support for allowing Liberty Mutual to offer this auto and home insurance program.

<sup>1</sup>Discounts are available where state laws and regulations allow, and may vary by state. Figure reflects average national savings for customers who switched to Liberty Mutual's group auto and home program. Based on data collected between 1/1/2012 and 6/30/2012. Individual premiums and savings will vary. To the extent permitted by law, applicants are individually underwritten; not all applicants may qualify. <sup>2</sup>For qualifying customers only. Subject to terms and conditions of Liberty Mutual's underwriting guidelines. Not available in CA and may vary by state. <sup>3</sup>Applies to a covered total loss. Your car must be less than one year old, have fewer than 15,000 miles and have had no previous owner. Does not apply to leased vehicles or motorcycles. Subject to applicable deductible. Not available in NC or WY. <sup>4</sup>Loss must be covered by your policy. Not available in AK. Coverage provided and underwritten by Liberty Mutual Insurance Company and its affiliates, 175 Berkeley Street, Boston, MA. ©2013 Liberty Mutual Insurance





## Make Dean Black Car your favorite ride home

Dean Black Car provides a safe, professional and comfortable environment to get you where you need to go. Whether traveling from the airport or to a special event, Dean Black Car can take you there.

Call today or visit us online to book your next trip.

**deanblackcar.com** | 1-800-282-3326





**Visit campus, relive Spartan memories, make new ones.**

## Eating at State is MORE than you remember.

With a fresh look and fresh, made-to-order food, the renovated dining halls are the perfect place to reminisce with friends and family. Executive Chefs oversee menus at each dining hall and ensure there are dishes to accommodate every Spartan.

Show your **MSU Alumni Association membership card** at the door and receive 20% off your meal at any residential dining hall on campus!

*Dining halls welcome all Spartans and Spartan fans.*



Visit [www.eatatstate.com](http://www.eatatstate.com) for dining hall hours, locations and menus.



## Enjoy summer fun in your next car!

Make your next car a reality with an auto loan from MSUFCU.

- Save on your monthly payment with low rates.
- Fast approval online, at a branch, or by phone.
- No prepayment penalties or application fees.

**Apply Today!**

**Not already a MSUFCU member? Not a problem!**  
All MSUAA members are eligible to join.



[www.msufcu.org](http://www.msufcu.org) • 517-333-2222 • 800-678-6967





# IT'S ABOUT SPARTAN PRIDE

- ✓ You proudly wear your MSU gear
- ✓ You instinctively know the proper response to "Go Green!"
- ✓ You beam whenever you see Spartans who are leaders, lifesavers or world changers.
- *You've supported our network of Spartans Helping Spartans by joining the MSU Alumni Association.*

**Join the MSU ALUMNI ASSOCIATION today and strengthen our Spartan Nation by:**

- Supporting the traditions that Spartans hold dear
- Building and participating in the MSU network
- Enriching the lives of Spartans
- Serving MSU and the communities where Spartans live and work

## JOIN TODAY. IT'S WHAT SPARTANS DO.

The MSU Alumni Association is your one true connection to half a million Spartans around the globe. And with you among our ranks, we're that much stronger.

[alumni.msu.edu/join](http://alumni.msu.edu/join)





# OH, THE PLACES WE GO!

by Paula M. Davenport

No matter where you travel, you're likely to run into someone or something with a Spartan connection. Spartans are an intrepid, intelligent and altruistic bunch. Last year alone, Spartans could be found in every corner of the globe.

They may have been working, learning, volunteering or simply enjoying themselves.

Many of them took sumptuous photographs of the landscapes, people and cultural touchstones in such places as Bolivia, Malawi, Nepal, Saudi Arabia, Brazil, China, Mongolia, Portugal and Europe.

On the following pages, you'll find some of their images. All were recently lauded in MSU's annual Global Focus photo competition.

International Studies and Programs, in partnership with the MSU Alumni Association, sponsors the friendly photography challenge to highlight the involvement of the MSU community around the world.

We hope this selection of this year's winning images will mentally transport you to some of the amazing locations touched by Spartans.

## PHOTO COMPETITION

The 2014 Global Focus competition will accept entries from alumni, faculty, staff and students Aug. 1 - Oct. 1.



[www.isp.msu.edu/awards/photocontest](http://www.isp.msu.edu/awards/photocontest)

## SPARTAN TRAVEL

Take a trip with other Spartans through Spartan Adventures, offered by the MSU Alumni Association.



[alumni.msu.edu/travel](http://alumni.msu.edu/travel)









Second Place  
**Celebrating  
 Rice Planting**  
 Nepal  
*Sushant Wagley*



Third Place  
**Gazing**  
 Italy  
*Maighdlin Talo*



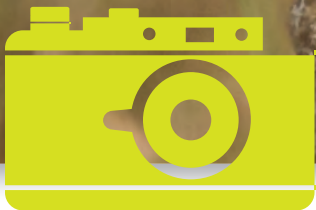
First Place  
**Porter**  
 China  
*Yulin Lu*





# STUDENT





# FACULTY & STAFF



◀ *First Place*  
**Burrowing Owl on Termite  
Mound in Pasture**

Brazil  
*Tom Conner*



▲ *Second Place*  
**Faces I Can't Forget**  
Malawi  
*Lisa S. Mulcrone*



◀ *Third Place*  
**Double Rainbow in  
Salvador, Brazil**  
Brazil  
*Eduardo Olivo*









▲ *Second Place*  
**Shaman's Market**  
 Bolivia  
*Donald Roberts*



◀ *Third Place*  
**Prayer for Peace**  
 Japan  
*Sarah Beth Hodge*

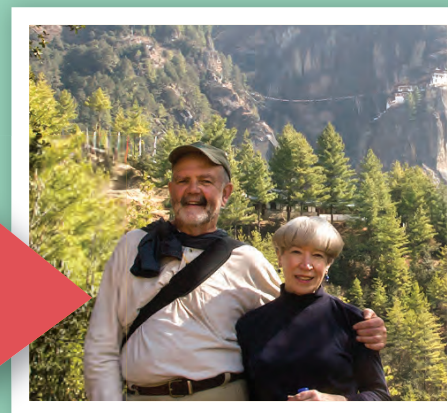
◀ *First Place*  
**Jeronimos Monastery**  
 Portugal  
*Ching-Ni Hsieh*



# ALUMNI



# DON'T LEAVE HOME WITHOUT TIPS FROM OUR PROS



**Before you pack your bags for Bali or a family reunion, try Don Roberts' photo tips for the best results:**

- ✦ Take lots of photographs
- ✦ Know your camera and buy good lenses
- ✦ Learn the basics of good composition
- ✦ Attend festivals, celebrations and events where people are enjoying themselves
- ✦ Master post-production techniques that will help transform your photos from good to great

*by Paula M. Davenport*

Perhaps you've been bitten by the travel bug and the photography bug. That can be a costly combination.

To help you get up to speed, we turned to a Spartan alumni couple. Don Roberts is a former IBM engineer. His wife Bethany A. Roberts is a former school teacher. Both graduated in the Class of 1962.

Their award-winning images have frequently been honored in the MSU Global Focus competition – begun in 1999.

The couple didn't dabble in photography until their retirement years. However, their frequent visits to museums and galleries over the years gave them a solid grounding in the art of good composition, Don Roberts says.

"We most enjoy locations where indigenous people

continue to keep most of their traditions. That includes the U.S., where we've visited Native American communities," he says.

Don Roberts says outside the U.S., you don't have to speak a foreign language to approach someone about taking their photograph. You do need to be a people person and that needs to come through in your approach. Most of the time, smiling at someone is enough for them to allow their photograph to be taken. He says in some instances you may also want to offer a small gratuity.



Check out Don Roberts' blog and a gallery of his photos at:

[www.onsouthpond.com](http://www.onsouthpond.com) and [www.artwanted.com/onsouthpond](http://www.artwanted.com/onsouthpond).





## EVERY SEAT IS THE BEST SEAT IN THE HOUSE.

With Smart Slide technology that allows easy access to the third row and an available Bose® 10-speaker sound system flowing music evenly throughout the cabin, every seat is first class in a Buick Enclave. Discover more at [buick.com](http://buick.com).



# Glenn Buege

Buick GMC  
3625 S. Pennsylvania Ave.  
Lansing, MI 48910  
(517) 393-7880  
[www.glennbuege.com](http://www.glennbuege.com)  
Located Minutes From Sparty!

From Price to Selection to Service...

*"It's Better at Buege"*

**BUICK. THE OFFICIAL  
VEHICLE OF SPARTAN  
ATHLETICS**



Allison 87' Donnie 87' Kristan 91' Matthew 91' Elizabeth 92' Jason 93' Emily 16'





Ryan Annis  
 Assad R. Assad  
 Nicholas J. Auz  
 Joshua Bach  
 Brittney A. Bailey  
 Marci Ellen Bratkowski  
 Nicholas A Cicotte  
 Michael Louis Dorantes  
 Doris Maria Fansler  
 Kathreine Gerster  
 Christopher Hauler  
 Jessica I. Hernandez  
 Kelsey Hicks  
 Kevona Y. Hicks  
 Kaitlyn Hlywa  
 Matthew Jannette  
 Jamisha Danielle Jeffery  
 Andrew Johnson

Donovan R. Johnson  
 Meghan Koorndyk  
 Megan A. Kosinski  
 Kendal Kotcher  
 Marissa Kreutzfeld  
 Amanda Kujawa  
 Nicole Lawrence  
 Jay Jordan Liggins  
 April Liponoga  
 Molly Lynch  
 Christopher J. MacArthur  
 Joseph Peter Madej  
 Duriel Mask  
 Sarah E. Newman  
 Brandon Joseph Palmer  
 Adrienne Powell  
 Matthew Rademacher  
 Jasmin Ramirez

Stacey M. Roberts  
 Hannah Robeson  
 Collin Rumsey  
 Alexander Sandora  
 Eric Sandrock  
 David C. Sully  
 Sarah Jayne Sheeban  
 Athena Smith  
 Morgan Paul Struck  
 Maram Sulimani  
 Kristie Taphouse  
 Paola Michelle Algarin Troia  
 Sarah Elizabeth VanSlooten  
 Albert Ware  
 Laura J. West  
 Alan B. Wolfe

**balfour**  
 balfour.com

2206QAM1247-14

## Thy Praises MSU

Students received their rings in a ceremony at Beaumont Tower after a march from the Spartan statue. President Simon, Sparty, the MSU Marching Band, students and their families all participated in the Third Annual Ring March on April 13, 2014.





# 100th ROSE BOWL GAME PANORAMA



Starting at only  
**\$29.95**

**Relive the stunning  
victory over Stanford!**

Available at **[pano.ly/msualum](http://pano.ly/msualum)**



MICHIGAN STATE UNIVERSITY | [shop.msu.edu](http://shop.msu.edu)

## PUT YOUR SPARTAN PRIDE ON DISPLAY



FATHEAD® Wall Graphics raise team spirit to a new level. They're removable, reusable, and are available in 18 styles!

Left:  
SPARTY (3'1"wx6'5"h)  
**\$89.99**

Center:  
BRESLIN (6'wx4'h)  
**\$99.99**

Right:  
LE'VEON BELL  
(3'9"wx6'2"h)  
**\$99.99**

Order online at  
**[shop.msu.edu](http://shop.msu.edu)**

[shop.msu.edu](http://shop.msu.edu), the *on-campus* e-commerce store • 166 Service Rd. • East Lansing, Michigan • [shopmsu@msu.edu](mailto:shopmsu@msu.edu)



# MSU ALUMNI ASSOCIAT



As your network of Spartans Helping Spartans, the MSU Alumni Association offers a variety of opportunities to connect you with other Spartans.

*Contact us at 877-MSU-ALUM for more information on our upcoming programs.*



Unless otherwise noted, obtain more information on these programs at [alumni.msu.edu/travel](http://alumni.msu.edu/travel)

## AUGUST 2014

### August 2-10

Great Pacific Northwest – Portland to Clarkston  
Spartan Pathways Tour

### August 6-21

Discover Switzerland  
Spartan Pathways Tour

### August 11-24

Euro Spree – A Two Week Extensive Tour of Europe  
Spartan Pathways Tour

### August 23-September 6

Odyssey to Oxford  
Oxford, England

### August 24-25

Spartan Move-in Volunteer Opportunity  
MSU Campus  
[alumni.msu.edu](http://alumni.msu.edu)

## SEPTEMBER 2014

### September 1-13

Symphony on the Blue Danube – A Classical Music Cruise  
Spartan Pathways Tour

### September 1-15

Tanzania & Kenya featuring MSU Professor Dr. Kay Holekamp  
Spartan Pathways Tour

### September 5

Kaleidoscope: Reflect. Recharge. Reimagine.  
Kellogg Hotel & Conference Center  
[sparrowfoundation.org/kaleidoscope](http://sparrowfoundation.org/kaleidoscope)



### September 13-October 7

Spain Exploration  
Spartan Pathways Tour

### September 21-October 2

Black Sea Serenade – Istanbul to Athens  
Spartan Pathways Tour

### September 22-27

MSU Homecoming Week  
MSU Campus  
[homecoming.msu.edu](http://homecoming.msu.edu)

### September 23-October 4

Spanish Serenade – Lisbon to Rome  
Spartan Pathways Tour

### September 24-October 2

Ancient Greece & Turkey – Athens to Istanbul  
Spartan Pathways Tour

### September 25

Grand Awards Gala  
Kellogg Hotel & Conference Center  
[homecoming.msu.edu](http://homecoming.msu.edu)

### September 26

Homecoming Parade  
Downtown East Lansing  
[homecoming.msu.edu](http://homecoming.msu.edu)

### September 27

Green and White Brunch  
Kellogg Hotel & Conference Center  
[homecoming.msu.edu](http://homecoming.msu.edu)

### September 27

MSU Families at Homecoming  
Tailgate and Family Weekend at the Rock  
[homecoming.msu.edu](http://homecoming.msu.edu)



# SPARTAN PATHWAYS TOURS EVENT CALENDAR



## OCTOBER 2014

**October 14-22**  
Italy's Apulia  
Spartan Pathways Tour

**October 20-28**  
Accent on the Adriatic -  
Venice to Rome  
Spartan Pathways Tour

## NOVEMBER 2014

**November 5-10**  
The Polar Bears of  
Churchill  
Spartan Pathways Tour

**November 16-  
December 1**  
India & Nepal  
Spartan Pathways Tour

## JANUARY 2015

**January 6-16**  
Mayan Mystique Cruise  
Spartan Pathways Tour

**January 11-20**  
Treasures of Patagonia  
Cruise  
Spartan Pathways Tour

**January 26-  
February 8**  
Expedition to  
Antarctica Cruise  
Spartan Pathways Tour

**January 22-24**  
Dog Sledding in  
Northern Michigan  
Spartan Pathways Tour

## FEBRUARY 2015

**February 1-7**  
Wolves of Yellowstone  
Spartan Pathways Tour

**February 16-23**  
Cuba ~ The People,  
Culture & Art  
Spartan Pathways Tour



**MICHIGAN STATE**  
UNIVERSITY

Alumni Association



# OH, THE PLACES WE GO!

by Paula M. Davenport

No matter where you travel, you're likely to run into someone or something with a Spartan connection. Spartans are an intrepid, intelligent and altruistic bunch. Last year alone, Spartans could be found in every corner of the globe.

They may have been working, learning, volunteering or simply enjoying themselves.

Many of them took sumptuous photographs of the landscapes, people and cultural touchstones in such places as Bolivia, Malawi, Nepal, Saudi Arabia, Brazil, China, Mongolia, Portugal and Europe.

On the following pages, you'll find some of their images. All were recently lauded in MSU's annual Global Focus photo competition.

International Studies and Programs, in partnership with the MSU Alumni Association, sponsors the friendly photography challenge to highlight the involvement of the MSU community around the world.

We hope this selection of this year's winning images will mentally transport you to some of the amazing locations touched by Spartans.

## PHOTO COMPETITION

The 2014 Global Focus competition will accept entries from alumni, faculty, staff and students Aug. 1 - Oct. 1.



[www.isp.msu.edu/awards/photocontest](http://www.isp.msu.edu/awards/photocontest)

## SPARTAN TRAVEL

Take a trip with other Spartans through Spartan Adventures, offered by the MSU Alumni Association.



[alumni.msu.edu/travel](http://alumni.msu.edu/travel)





Second Place  
**Celebrating  
Rice Planting**  
Nepal  
*Sushant Wagley*

Third Place  
**Gazing**  
Italy  
*Maighdlin Talo*



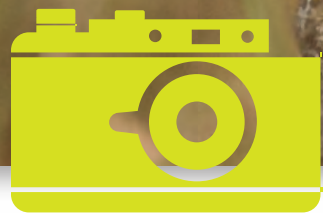
First Place  
**Porter**  
China  
*Yulin Lu*



STUDENT







# FACULTY & STAFF

◀ *First Place*  
**Burrowing Owl on Termite Mound in Pasture**  
 Brazil  
 Tom Conner



▲ *Second Place*  
**Faces I Can't Forget**  
 Malawi  
 Lisa S. Mulcrone



◀ *Third Place*  
**Double Rainbow in Salvador, Brazil**  
 Brazil  
 Eduardo Olivo



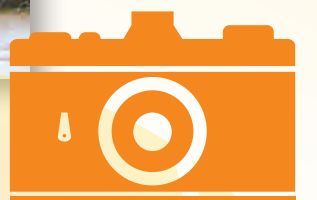


▲ Second Place  
**Shaman's Market**  
 Bolivia  
*Donald Roberts*



◀ Third Place  
**Prayer for Peace**  
 Japan  
*Sarah Beth Hodge*

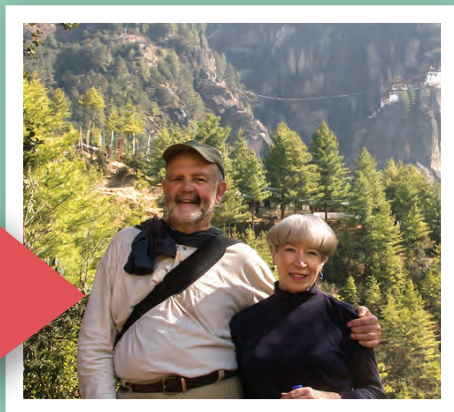
◀ First Place  
**Jeronimos Monastery**  
 Portugal  
*Ching-Ni Hsieh*



# ALUMNI



# DON'T LEAVE HOME WITHOUT TIPS FROM OUR PROS



**Before you pack your bags for Bali or a family reunion, try Don Roberts' photo tips for the best results:**

- Take lots of photographs
- Know your camera and buy good lenses
- Learn the basics of good composition
- Attend festivals, celebrations and events where people are enjoying themselves
- Master post-production techniques that will help transform your photos from good to great

by Paula M. Davenport

Perhaps you've been bitten by the travel bug and the photography bug. That can be a costly combination.

To help you get up to speed, we turned to a Spartan alumni couple. Don Roberts is a former IBM engineer. His wife Bethany A. Roberts is a former school teacher. Both graduated in the Class of 1962.

Their award-winning images have frequently been honored in the MSU Global Focus competition – begun in 1999.

The couple didn't dabble in photography until their retirement years. However, their frequent visits to museums and galleries over the years gave them a solid grounding in the art of good composition, Don Roberts says.

"We most enjoy locations where indigenous people

continue to keep most of their traditions. That includes the U.S., where we've visited Native American communities," he says.

Don Roberts says outside the U.S., you don't have to speak a foreign language to approach someone about taking their photograph. You do need to be a people person and that needs to come through in your approach. Most of the time, smiling at someone is enough for them to allow their photograph to be taken. He says in some instances you may also want to offer a small gratuity.



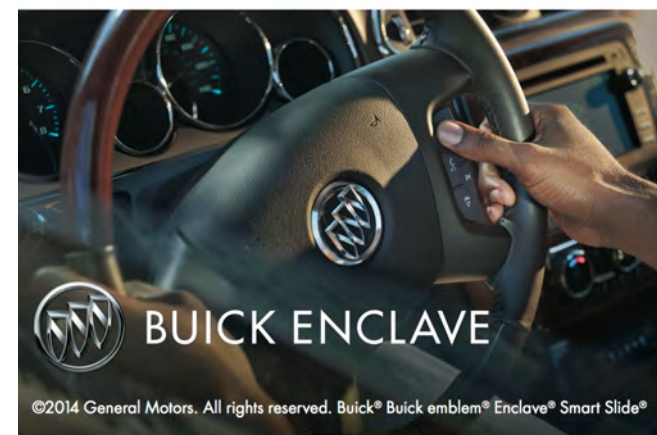
Check out Don Roberts' blog and a gallery of his photos at:

[www.onsouthpond.com](http://www.onsouthpond.com) and [www.artwanted.com/onsouthpond](http://www.artwanted.com/onsouthpond).



## EVERY SEAT IS THE BEST SEAT IN THE HOUSE.

With Smart Slide technology that allows easy access to the third row and an available Bose® 10-speaker sound system flowing music evenly throughout the cabin, every seat is first class in a Buick Enclave. Discover more at [buick.com](http://buick.com).



### Glenn Buege

Buick GMC  
3625 S. Pennsylvania Ave.  
Lansing, MI 48910  
(517) 393-7880

[www.glennbuege.com](http://www.glennbuege.com)  
Located Minutes From Sparty!

**From Price to Selection to Service...**

*"It's Better at Buege"*

**BUICK. THE OFFICIAL  
VEHICLE OF SPARTAN  
ATHLETICS**



Allison 8' Donnie 8' Kristan 9' Matthew 9' Elizabeth 9' Jason 9' Emily 16'





# MICHIGAN STATE UNIVERSITY

## THE OFFICIAL RING

The Michigan State University Alumni Association would like to congratulate the Spring 2014 Ring March and Ceremony participants.

Ryan Annis  
Assad R. Assad  
Nicholas J. Auz  
Joshua Bach  
Brittney A. Bailey  
Marci Ellen Bratkowski  
Nicholas A Cicotte  
Michael Louis Dorantes  
Doris Maria Fansler  
Kathreine Gerster  
Christopher Hauler  
Jessica I. Hernandez  
Kelsey Hicks  
Kevona Y. Hicks  
Kaitlyn Hlywa  
Matthew Jannette  
Jamisha Danielle Jeffery  
Andrew Johnson

Donovan R. Johnson  
Meghan Koorndyk  
Megan A. Kosinski  
Kendal Kotcher  
Marissa Kreutzfeld  
Amanda Kujawa  
Nicole Lawrence  
Jay Jordan Liggins  
April Liponoga  
Molly Lynch  
Christopher J. MacArthur  
Joseph Peter Madej  
Duriel Mask  
Sarah E. Newman  
Brandon Joseph Palmer  
Adrienne Powell  
Matthew Rademacher  
Jasmin Ramirez

Stacey M. Roberts  
Hannah Robeson  
Collin Rumsey  
Alexander Sandora  
Eric Sandrock  
David C. Sully  
Sarah Jayne Sheeban  
Athena Smith  
Morgan Paul Struck  
Maram Sulimani  
Kristie Taphouse  
Paola Michelle Algarin Troia  
Sarah Elizabeth VanSlooten  
Albert Ware  
Laura J. West  
Alan B. Wolfe

**balfour**  
balfour.com

2206.QAM14-14

## Thy Praises MSU

Students received their rings in a ceremony at Beaumont Tower after a march from the Spartan statue. President Simon, Sparty, the MSU Marching Band, students and their families all participated in the Third Annual Ring March on April 13, 2014.



# 100th ROSE BOWL GAME PANORAMA



Starting at only **\$29.95**

**Relive the stunning victory over Stanford!**

Available at **pano.ly/msualum**



## PUT YOUR SPARTAN PRIDE ON DISPLAY



FATHEAD® Wall Graphics raise team spirit to a new level. They're removable, reusable, and are available in 18 styles!

Left:  
SPARTY (3'1"wx6'5"h)  
**\$89.99**

Center:  
BRESLIN (6'wx4'h)  
**\$99.99**

Right:  
LE'VEON BELL (3'9"wx6'2"h)  
**\$99.99**

Order online at **shop.msu.edu**

shop.msu.edu, the on-campus e-commerce store • 166 Service Rd. • East Lansing, Michigan • shopmsu@msu.edu



# MSU ALUMNI ASSOCIATION EVENT CALENDAR



As your network of Spartans Helping Spartans, the MSU Alumni Association offers a variety of opportunities to connect you with other Spartans.

Contact us at 877-MSU-ALUM for more information on our upcoming programs.



Unless otherwise noted, obtain more information on these programs at [alumni.msu.edu/travel](http://alumni.msu.edu/travel)

## AUGUST 2014

**August 2-10**  
Great Pacific Northwest – Portland to Clarkston  
Spartan Pathways Tour

**August 6-21**  
Discover Switzerland  
Spartan Pathways Tour

**August 11-24**  
Euro Spree – A Two Week Extensive Tour of Europe  
Spartan Pathways Tour

**August 23-September 6**  
Odyssey to Oxford  
Oxford, England

**August 24-25**  
Spartan Move-in Volunteer Opportunity  
MSU Campus  
[alumni.msu.edu](http://alumni.msu.edu)

## SEPTEMBER 2014

**September 1-13**  
Symphony on the Blue Danube – A Classical Music Cruise  
Spartan Pathways Tour

**September 1-15**  
Tanzania & Kenya featuring MSU Professor Dr. Kay Holekamp  
Spartan Pathways Tour

**September 5**  
Kaleidoscope: Reflect. Recharge. Reimagine.  
Kellogg Hotel & Conference Center  
[sparrowfoundation.org/kaleidoscope](http://sparrowfoundation.org/kaleidoscope)



**September 13-October 7**  
Spain Exploration  
Spartan Pathways Tour

**September 21-October 2**  
Black Sea Serenade – Istanbul to Athens  
Spartan Pathways Tour

**September 22-27**  
MSU Homecoming Week  
MSU Campus  
[homecoming.msu.edu](http://homecoming.msu.edu)

**September 23-October 4**  
Spanish Serenade – Lisbon to Rome  
Spartan Pathways Tour

**September 24-October 2**  
Ancient Greece & Turkey – Athens to Istanbul  
Spartan Pathways Tour

**September 25**  
Grand Awards Gala  
Kellogg Hotel & Conference Center  
[homecoming.msu.edu](http://homecoming.msu.edu)

**September 26**  
Homecoming Parade  
Downtown East Lansing  
[homecoming.msu.edu](http://homecoming.msu.edu)

**September 27**  
Green and White Brunch  
Kellogg Hotel & Conference Center  
[homecoming.msu.edu](http://homecoming.msu.edu)

**September 27**  
MSU Families at Homecoming  
Tailgate and Family Weekend at the Rock  
[homecoming.msu.edu](http://homecoming.msu.edu)

## OCTOBER 2014

**October 14-22**  
Italy's Apulia  
Spartan Pathways Tour

**October 20-28**  
Accent on the Adriatic – Venice to Rome  
Spartan Pathways Tour



## NOVEMBER 2014

**November 5-10**  
The Polar Bears of Churchill  
Spartan Pathways Tour

**November 16-December 1**  
India & Nepal  
Spartan Pathways Tour



## JANUARY 2015

**January 6-16**  
Mayan Mystique Cruise  
Spartan Pathways Tour

**January 11-20**  
Treasures of Patagonia  
Cruise  
Spartan Pathways Tour

**January 26-February 8**  
Expedition to Antarctica  
Cruise  
Spartan Pathways Tour

**January 22-24**  
Dog Sledding in Northern Michigan  
Spartan Pathways Tour

## FEBRUARY 2015

**February 1-7**  
Wolves of Yellowstone  
Spartan Pathways Tour

**February 16-23**  
Cuba – The People, Culture & Art  
Spartan Pathways Tour



MICHIGAN STATE  
UNIVERSITY

Alumni Association







# #ROAD LESS #TRAVELED

## Taking students to a “T”

**W**hat sets Michigan State University Spartans apart isn't just *what* they do but *how* they do it—beginning with powerful, customized undergraduate experiences.

“The MSU experience is a journey that prepares our students to compete against the best anywhere in the world,” says President Lou Anna K. Simon. “But it also is an education of the whole person, a journey that broadens horizons, develops confidence and kindles the desire to make a difference.”

Michigan State's undergraduate experience is the focus of the latest MSU *President's Report*. Titled *Inside Out*, the multimedia report takes an in-depth look at nine Spartan undergraduates, demonstrating how each taps into the university's vast and varied opportunities to create their own learning paths of extreme personalization.

To capture their experiences, an MSU film crew – including a team of student producers – documented the featured undergraduates throughout the fall 2013 semester.

The report provides a window on the tremendously rich student experience at MSU, says Heather Swain, vice president for Communications and Brand Strategy.

“As a world-class research university, MSU provides such a depth and breadth of high-caliber experiences that the possibilities for shaping an extraordinary, unique undergraduate experience are virtually limitless,” Swain says.

As students craft distinctive paths for themselves, they are developing what are known as “T-shaped” attributes.

Information technology experts were among the first to use the term to describe the skills necessary to thrive in today's workplaces. The vertical bar represents deep specialized knowledge and the horizontal bar represents the kinds of skills that pave the way for effectively applying expertise – from the ability to collaborate and think critically to developing global awareness and an appreciation for diversity.

To help develop T-shaped Spartans, Michigan State provides students with exceptional academic programs and a vast array of high-impact learning experiences. From the beginning of their college careers, undergraduates may study abroad, conduct research alongside faculty members, develop entrepreneurial ventures and intern with global companies.

“Opportunities for students to create customized, individualized pathways set Michigan State apart from other universities and also set our students apart,” says Simon.

“Each path leads to not just one transformational experience, but to many—yielding a powerful and highly personal undergraduate journey,” she says.

*Meredith Mescher is a writer and editor in MSU's Communications and Brand Strategy office.*



For more information visit: [www.msu.edu/insideout](http://www.msu.edu/insideout).



# BRAIN STORM



## Craig Pearson

**Hometown:** Bloomfield Hills, Michigan

**Class year:** Senior

**Major and college:** Biochemistry and molecular biology, neuroscience, and English, College of Natural Science, College of Arts and Letters, and Honors College

Craig Pearson crafted a one-of-a-kind academic program with three majors to accommodate the depth and breadth of his scientific and literary interests. In the process, he changed the way he sees the world. He founded a literary journal for students with visual disabilities, has played key roles in research investigating treatments for blindness and examining brain activity in people as they read literature. As a Marshall Scholar, Pearson will pursue doctoral studies at Cambridge University and continue to blaze a trail into the workings of the human mind and body.

“The environment at Michigan State has very much formed the way that I approach academics, the way that I approach research,” says Pearson. “It’s changed the way that I see the world in a creative lens, and it’s been the community that I’ve lived in for the past four years. I’m wrapping up my narrative as a student, but I’m just beginning my life as a lifelong Spartan, and that’s exciting.”







# SMART MOVES



## Isaac Anguiano

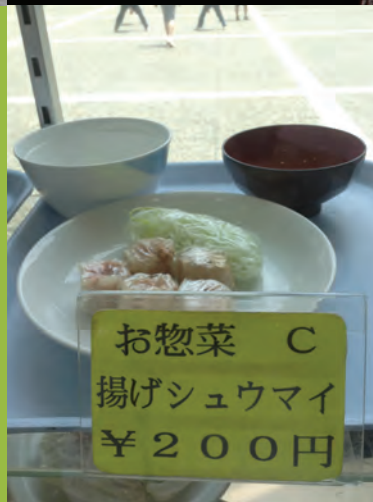
**Hometown:** Tyler, Texas

**Class year:** Freshman

**Major and college:** Finance, College of Business

Long before he decided to major in finance at MSU, Isaac Anguiano understood the relationship between risk and reward. The freshman from Texas grew up in a family of migrant workers whose livelihood depended on a willingness to move to a new place to make a better life. Anguiano moved across the country to attend MSU, but first he traveled across the world as part of an MSU Freshman Seminar Abroad experience in Japan. As the first-generation college student gains momentum in his new college home, he knows that stepping out of his comfort zone was a smart move.

“The studies I’m pursuing are to better myself and the society that we live in to one day build a corporation that helps migrant workers start their own businesses, which can help really poor communities in any part of the world,” Anguiano says.













# SOCIAL LIFE



## Claire Babala

**Hometown:** Plymouth, Michigan

**Class year:** Sophomore

**Major and college:** Professional writing and arts and humanities, College of Arts and Letters, Residential College in the Arts, Letters and Humanities, and Honors College

Claire Babala is tapping into the extensive network she's created for herself at MSU. On any given day, the Honors College sophomore, who's studying arts and humanities and professional writing, may be producing content for MSU's official social media accounts as part of an internship, mentoring young people in Detroit through a volunteer program or flying by the seat of her pants with fellow members of her improv group. While leveraging an array of activities and experiences to inform decisions about her career path, Babala is having the time of her life and making a difference in the lives of others.

"Over the past semester, I have changed and grown so much thanks to the opportunities I've found here at Michigan State," says Babala. "To have the chance to have at least a small part of my progression documented, well, it was once in a lifetime."





# Move with a Spartan.

The **Michigan State University** Alumni Association has partnered with **Stevens Worldwide Van Lines** to create a preferred moving program for alumni like you to keep your move organized, secure and enjoyable!

Your **Michigan State Alumni Preferred Moving Program** includes:

- **Full-Service Moves** – Stevens Home Protection Kit™, storage, packing and unpacking services, and value coverage.
- **International Relocation** – Personalized attention and customized services for any international relocation.
- **Containerized Moving & Storage** – Containers come in multiple sizes, are easy to load, weatherproof and secure.
- **The Small Move Solution** – Includes a shipping container and quick transportation to your destination.
- **You Load. We Drive.** – A moving van arrives, you pack it and then a professional driver safely transports your items.
- **PLUS Program** – A network of experienced real estate professionals and cash rebates on the sale or purchase of your home.
- **Stevens Concierge Services** – Assists with securing home services – cable and satellite TV, and Internet.

Contact the **Stevens University Move Center** at 800.796.9988, or go to [www.stevensworldwide.com/msualumni](http://www.stevensworldwide.com/msualumni) for more information.



Proud supporter of the National Breast Cancer Foundation, Inc.®


**STEVENS**  
worldwide van lines  
*The Way to Move. The Way to Care.*



**Michigan State Alumni-Owned**







Lower your **energy costs**.  
Increase **efficiency**.  
Improve your **bottom line**.

Over 200 rebates are available for your business. Call **(855) 9-REBATE** or visit **[ConsumersEnergy.com/mybusiness](http://ConsumersEnergy.com/mybusiness)**

***Consumers Energy***

*Count on Us*

**HELPING MICHIGAN SAVE ENERGY.  
THAT'S OUR PROMISE.**



# Go Green! Go White!

Beautiful hand beaded leather maasai sandals made in Tanzania. These Green and White designs along with other gorgeous styles and colors are available in sizes 6 through 11 (whole sizes only). Each pair is \$40, plus shipping.



**Empowering women through employment training, education and spiritual enrichment.**

All proceeds from our sandals and other products go back into Shining a Light to empower, educate and train women, creating opportunities for employment and sustainability to support themselves and their children.

To learn more about Shining a Light and to support your Spartans in style, visit [www.shiningalight.org](http://www.shiningalight.org) or call 517-819-3008

*Please allow 4 weeks for delivery.  
Shining A Light is a non-profit project.*



## Michiganstatejewelry.com

**Wheat JEWELERS**

4990 Marsh Road, Okemos, MI 48864 (517) 349-0101



michigan state university  
**whartoncenter**  
 for performing arts  
**2014-2015 SEASON**












**SUBSCRIBE TODAY AND SAVE UP TO 30%**

**TICKET PACKAGES NOW AVAILABLE!**

**WHARTONCENTER.COM**  
**1-800-WHARTON**

## The Spartan Hall of Fame Caf 

### A Destination Location for MSU Alums!

A "must-see" restaurant for every Spartan fan with an extensive menu including pasta, pizza, sandwiches, unique salads, steaks, chicken, ribs and more!

A Truly Memorable  
 Spartan Experience...  
 Every Time!





# ENGINEERING & DESIGN

Design Day celebrates its **20th** anniversary



*Over the years, crowd pleasers have included such creations as the animatronic hyena created for African field research.*



# STUDENT SUCCESS BY SIGN



*Patricia Mroczek is a communications manager  
for the College of Engineering.*

*by Patricia Mroczek*

**T**he Boeing Co. wanted to improve its flight simulation software.

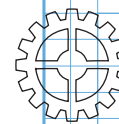
Meijer wanted a mobile app so customers could send real-time feedback about their shopping experiences.

An NGO sought an affordable device that poor Guatemalans could use to harvest protein-rich pigeon peas.

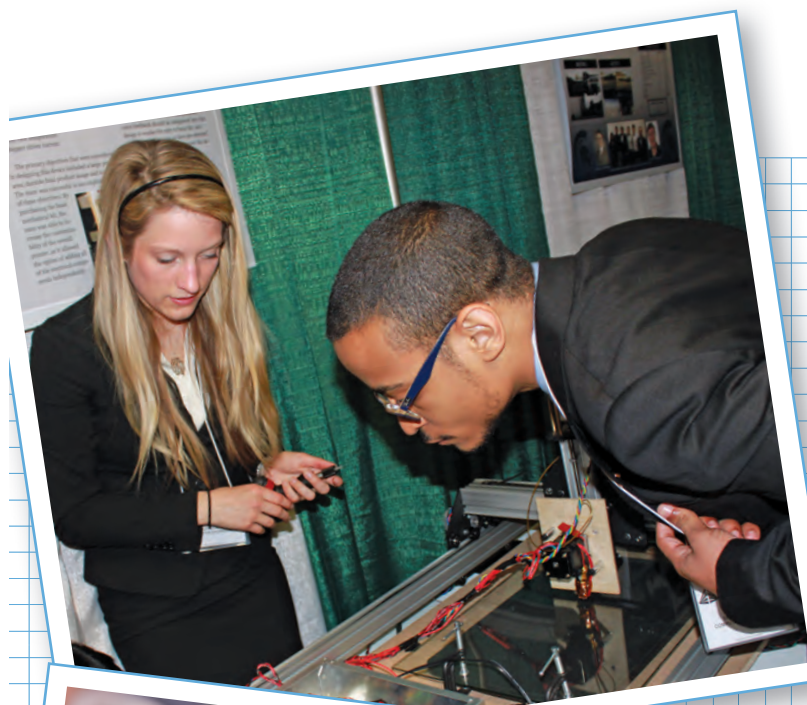
Who did they turn to? Student engineers at Michigan State University. In fact, 619 students divided into teams and tackled 152 real-world challenges at the College of Engineering's 20th Design Day in April. The college hosts two such days each academic year, one each at the end of fall and spring semesters.

The wildly popular biannual events began in 1994. Since then, generations of MSU students have tested their brilliance by seeking solutions to tangible issues posed by actual clients. General Motors, Whirlpool, Bosch, Google, Union Pacific, Ingersoll Rand, U.S. Steel, Habitat for Humanity and scores of others were among this spring's heavyweights.

Teams encompassed students from all 10 engineering majors. They labored for months on strategy, design, and the execution and presentation of their recommendations and discoveries.







*Above: Students spend the day inspecting one another's work.*

*Below: Anniversary booklet.*

## Spring 2014 Design Day

- 619 student engineering participants
- 152 teams

## Capstone projects

- 337 graduating seniors
- 78 teams
- 43 companies

## Design Day Outreach

- 6 schools
- 150 students in grades 9-12
- 50 percent of pupils from under-represented populations

One team hatched a plausible plan to connect Bath Township to a well-traveled network of recreational trails. Another analyzed the marketability of a new type of foam that can be recycled rather than dumped after its life in furniture, mattresses and automobiles.

Meanwhile, peers looked for time- and cost-saving techniques that the Peckham clothing company could adopt to streamline the labor-intensive production of Patagonia jungle shirts.

Others designed an electronic parachute deployment system for Texas Instruments, whose products include a line of hobby rockets.

"We turn our lessons into hands-on projects in two-week milestones. The process of planning, designing and building are also important in the professional engineering world," says mechanical engineering senior David Miller.

"Add in the fun of competition and MSU gets to show off what engineers can accomplish," says the Grand Haven native.

And what a show it is. The aspiring MSU engineers, dressed in their professional best, crammed the nooks and crannies of the College of Engineering's sprawling three-story building.

Their high-tech show and tell materialized in the form of tabletop displays, public presentations, posters and prototypes. Swirling around it all were representatives from participating corporations, fellow collegians, faculty, judges, the media and throngs of high-spirited junior high- and high-school students.

"Design Day, without fail, is one of the most important and

popular days in our college," says Leo Kempel, acting dean of the College of Engineering. "It's where we can see the valuable lessons learned by our students being applied with enthusiasm to innovative solutions in a real-world setting. It's creativity come alive."

Wayne Dyksen is the executive director of Design Day. He says "design is at the core of all our engineering programs, starting in the first week of class with our freshmen, and culminating in the final semester with our seniors in their capstone project courses.

"The impact of our emphasis on creativity and design is evident each year," he adds.

While it's a lot of fun, it may potentially result in breakthrough solutions to vexing engineering problems, launch young careers and catapult student engineers into the enviable ranks of profit-making licensees.

"The concept of Design Day is really powerful," says Adam J. Haas, '98, vice president of Ford Motor Company's technology services organization in India.

"I really enjoy walking the floor and meeting teams from all the disciplines to understand how they have collaborated with each other. You can sense a lot of pride, a sense of completion and maybe even a bit of exhaustion," Haas says.

And perhaps more importantly, MSU students who have Design Day experiences on their resumes tend to really stand out and perform well in professional settings, he adds.



See the Design Day video:  
[egr.msu.edu/spotlights/design-day](http://egr.msu.edu/spotlights/design-day)



Read the 20th anniversary edition of the  
"Design Day" booklet with project descriptions:  
[designday.egr.msu.edu/booklet](http://designday.egr.msu.edu/booklet)



# STUDENTS DESIGN COZY BLANKET TO TREAT JAUNDICED BABIES:

*Pairs a mother's love with fiber optics*

*by Patricia Mroczek*

One team of MSU engineering majors created a special blanket that could become a welcome addition wherever babies are delivered.

Data shows 60 percent of infants are born jaundiced and many spend their first days of life isolated from their mothers underneath special lights that help them eliminate bilirubin—a naturally occurring pigment that in excess may result in serious disabilities.

One of MSU's student engineering teams, called Three Biosystems, created a prototype device that breaks down bilirubin molecules while the baby is cuddled in the loving arms of its mother. Called Swaddle-mi-Bili, the project was among the 150 projects on display at the 20th Design Day competition.

Oliver Bloom, Vu Hoang and Alexa Jones created a wearable treatment that uses fiber optics inside an infant's swaddle blanket as a friendlier means for light transfer.

They first met with 85 nurses and doctors in Flint and Lansing hoping to find a way for parents to hold their newborns during treatment, which usually involves isolating the baby in incubators or on small inflexible pads during

those first precious days of bonding time.

"We set out to improve on the traditional phototherapy method and came up with the swaddle idea," Jones says.

Bloom adds, "The blue light is what provides the treatment. The medical staffs loved the idea and were ecstatic about it."

Swaddle-mi-Bili won a Student Business Model competition in Lansing and finished in the top eight of 84 teams at the Michigan Collegiate Innovation Prize competition in February. It was also fourth of 40 at the International Business Model Competition in Provo, Utah, in May.

"We've learned so much about engineering, business and team work," Hoang says.

The three students graduated from Michigan State on May 4. Bloom will continue his studies in a biomedical engineering master's degree program at the University of Michigan. Hoang will enter the operations management training program at global food giant Heinz Company. Jones will enter the analysts program with the multinational investment banking firm Goldman Sachs.

She says the team intends to continue work on their innovative idea.





# HAPPY LAN DINGS



Whether visiting Lansing or coming home, count on LAN to get you to your destination quickly and hassle-free. We're close, convenient and committed to helping you fly happy.

TRAVEL SIMPLIFIED



[flylansing.com](http://flylansing.com)



## ONCE A SPARTAN ALWAYS A SPARTAN.



[alumni.msu.edu/about/](http://alumni.msu.edu/about/)

**S SPARTAN**  
**BOOKSTORE**  
THE OFFICIAL MSU BOOKSTORE

International Center | [spartanbookstore.com](http://spartanbookstore.com)

Passion and pride.  
Trial and triumph.  
Alumni united as one.

SHOP SPARTAN BOOKSTORE  
FOR AUTHENTIC SIDELINE GEAR,  
CLASSIC COMFORT APPAREL, OR  
THE EVERYDAY LOOK YOU NEED  
TO SHOW YOUR SPARTAN PRIDE.



Text "MSUALUMNIA" to 22022 to get **15% OFF** off your next purchase of \$75 or more\* in apparel and gifts in-store at the Spartan Bookstore or online at [spartanbook.com](http://spartanbook.com).\*

\*Valid thru 8/01/14 in-store or online. Minimum qualifying purchase of \$75, before taxes, required. Valid on regular, sale, promotional and/or clearance priced items. Not valid on gift cards, electronics, graduation regalia, health & beauty, ebooks, course packs, textbooks or textbook rentals. No adjustment for prior purchases. Limit one coupon per customer. Duplicated or altered coupons will not be accepted. Coupon cannot be combined with any other coupon or discount. No rain checks on offer unless required by law. Coupon limited to one-time use only and must be surrendered at time of purchase. No cash or credit back. No cash value. Void where prohibited. © 2014 Nebraska Book Company, Inc. d/b/a Neebo®



# WKAR

A NETWORK OF OPPORTUNITY







## SPORTS



*Mark Dantonio is emerging as MSU's most successful football coach since the golden era of Biggie Munn and Duffy Daugherty.*

MSU Athletic Media Communications

## DANTONIO: DON'T REST ON OUR ROSES

*Can this year's team coalesce to become champions?*

by Robert Bao

"Move the rock!" In MSU Football Coach Mark Dantonio's parlance, the phrase means to commit to new and bigger goals, to stay hungry and to keep applying the same effort it took to win a Rose Bowl.

Those hoping that the Spartans will ease up in 2014 might be in for a disappointment. Dantonio simply will not let his team rest on the laurels of a Big Ten championship, a Rose Bowl title and a top five national ranking.

He's shooting for higher goals, and there are indications that he could well succeed — again. For one thing, he boasts a proven quarterback. Junior Connor

Cook, who looked ever so comfortable in big game situations last year, will lead an offense that hit stride in the conference season and returns fairly intact. Proven skill players on offense, along with depth, could allow MSU to outscore opponents as the defense works to fill some holes caused by graduation.

Last season it was the defense that had to perform its magic as the offense coalesced. This year it might be the reverse.

### PLUGGING THE HOLES

The nation's No. 1 defense in 2013 loses seven key players, including six starters. Gone

are starting linebackers Max Bullough and Denicos Allen, who provided leadership and made key plays all season. In the backfield, MSU needs to replace Darqueze Dennard — a first-round NFL draft choice and winner of the Jim Thorpe award as the nation's top cornerback — and hard-hitting safety Isaiah Lewis. MSU also needs to plug the defensive line holes left by starting tackles Micajah Reynolds and Tyler Hoover and defensive end Denzel Drane.

Some pundits expect MSU's defense to be humming by mid-season. Assistant Head Coach and Defensive Coordinator Pat

Narduzzi, winner of the Frank Broyles award as the nation's top assistant coach, is back — along with assistants Harlon Barnett, Ron Burton and Mike Tressel. And they have plenty of talent with which to rebuild.

Key returners on defense include Shilique Calhoun and Marcus Rush at defensive end, Taiwan Jones, Darien Harris and Ed Davis at linebacker, and safety Kurtis Drummond and corner Trae Waynes in the backfield — the so-called "No Fly Zone." Dantonio has referred to Jones as a "thumper," an ideal physical specimen to patrol the middle.



Vying to join these proven play-makers are a number of younger players, including Riley Bullough and Jon Reschke at linebacker; Darian Hicks, R.J. Williamson and Demetrious Cox in the backfield; and Damon Knox, Joel Heath, Brandon Clemons and Demetrius Cooper on the line. Cooper, a redshirt freshman, opened some eyes in the Green and White game as a potential playmaker who can affect the quarterback like Calhoun.

"He's gained weight, and he understands his role in the defense," says Calhoun of Cooper. "He's still keeping the skill set, he's using it, and playing within our defense."

In addition, MSU has some very highly-touted incoming freshmen who might see the playing field on defense next season. Malik McDowell, at 6'7", the 290-pound behemoth and top-ranked recruit from the state of Michigan, has the speed and size to earn playing time at either defensive end or tackle. In addition, ESPN four-star defensive line recruits Craig Evans of Wisconsin and Enoch Smith, Jr. of Illinois could earn early playing time.

Spartan fans expect MSU's defense to gel at some point in the season.

## OFFENSE KNOWS THE DRILL

Initially MSU will rely heavily on the offense, a veteran unit that revolves around a quarterback who threw for 22 touchdowns last season against only six interceptions. Most importantly, Cook showed coolness under pressure earning MVP honors in MSU's 34-24 win over Ohio State in the Big Ten Championship game and also in the comeback 24-20 win against Stanford in the 100th Rose Bowl, where he passed for a career-high 332 yards.

"He's a very confident player," says Dantonio. "I think he's got a big upside in terms of what he can do with the football – not just throwing the ball."

Offensive coordinator Dave Warner – and assistants Jim Bollman, Brad Salem, Terrence Samuel and Mark Staten – will also benefit from having proven players at a number of positions, beginning with running back Jeremy Langford and fullback Trevon Pendleton in the backfield. Langford emerged last year as a tough, productive running back who is able to make late break-away runs to seal a win. At wide receiver, MSU only lost one senior, Bennie Fowler, while returning a slew of receivers including Tony Lippett, Keith Mumphery, Aaron Burbridge, Macgarrett Kings Jr. and R.J. Shelton.

The offensive line lost Blake Treadwell, Fou Fonoti and Dan France, but return at least seven players boasting experience—Jack Conklin, Jack Allen, Kodi Kieler, Donavon Clark, Connor Kruse and Travis Jackson. Younger players like Dennis Finley, Benny McGowan and Zach Higgins have a chance to step up, as does

incoming junior college transfer Miguel Machado. At tight end, Josiah Price emerged as a weapon in the Green and White game. Joining him are Andrew Gleichert and rising talent Jamal Lyles, a converted defensive end.

Special teams will return three-time Academic All-American senior punter Mike Sadler and sophomore kicker Mike Geiger, who led the Big Ten in field goal percentage by making 15 out of 16 last seasons. Kickoff returner Shelton and punt returner Kings enjoyed solid seasons last year.

Beyond just players and coaches, Dantonio seeks to establish the

same intangibles that led to success in the past.

"You have to measure up on game day but you have to measure up in the locker room too," he says, alluding to the need to find new leaders to replace a senior class that won 42 games in four years. "Chemistry creates the culture."

If MSU can continue its winning ways, he says, it will be the "threshold of a new era."

*Top: Senior running back Jeremy Langford boasted 100-yard-plus games in eight straight Big Ten games.*

*Lower: Connor Cook enters his junior season ranked among MSU's all-time leaders. He is 12-1 as a starter and a proven performer in big games.*



Matt Mitchell/MSU Athletic Media Communications



Matt Mitchell/MSU Athletic Media Communications



by Robert Bao

## WOMEN'S GOLF TEAM SUSTAINS STREAK:

The MSU women's golf team won its third Big Ten title in four years, tying with Ohio State in French Lick, IN, at the Big Ten Championship on April 27. They earned a berth in the NCAA Regionals for the 16th consecutive year and made it to the finals for the third straight season. "We're very proud of our streak and want to keep it going as long as possible," says Head Coach Stacy Slobodnik-Stoll. MSU received the automatic bid to the NCAA by winning the tiebreaker with Ohio State – the lowest cumulative

▲ score for all six golfers (only four are counted for the tournament). The Spartans are led by a trio of seniors: Allyssa Ferrell, Christine Meier and Liz Nagel, and were No. 27 in the Golfweek/Sagarin rankings. Slobodnik-Stoll has won a total of 33 tournaments since taking over the program in 1997.

## NFL KNOWS SPARTANS WILL:

MSU senior cornerback Darqueze Dennard, a consensus first-team All-American and 2013 Jim Thorpe Award winner, was selected by the Cincinnati Bengals in the first round of the NFL draft (No. 24 overall), becoming the 47th Spartan to be a first-round selection. Since the inception of

the NFL Draft in 1967, MSU has had at least one player chosen every year. A native of Dry Branch, GA, Dennard was this season's Tatum-Woodson Big Ten Defensive Back of the Year and a unanimous first-team All-Big Ten pick by the coaches. Dennard was one of the main reasons MSU was No. 1 in the NCAA Football Bowl Subdivision in pass efficiency defense (92.3 rating), No. 2 in total defense (252.2 ypg.) and No. 3 in pass defense (165.6 ypg.). Dennard graduated from Michigan State with a 3.66 GPA in May.

## SPARTAN FOOTBALL TO TREK WEST:

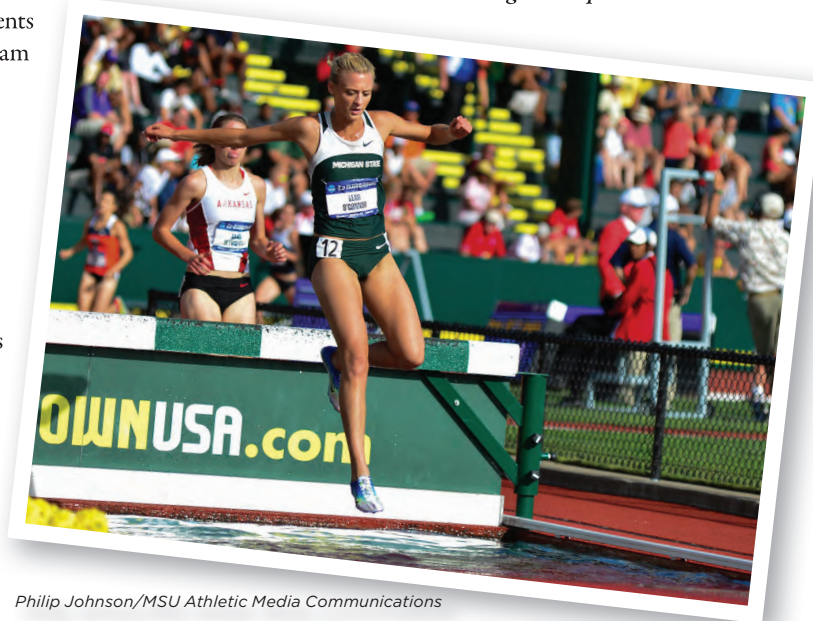
MSU inked a home-and-home football series with Arizona State in 2018 and 2019. The Spartans will play in Sun Devil Stadium in Tempe on Sept. 8, 2018, while ASU will come to Spartan Stadium on Sept. 14, 2019. "The Arizona State series provides MSU alums in the West and Southwest with an opportunity to see the Spartans compete against one of the Pac-12's top football programs," says Mark Hollis, MSU athletics director. Hollis says there are some historical ties between the programs by way of

Frank Kush, Darryl Rogers, Dick Tamburo and Chuck Fairbanks. MSU and ASU have played twice, with the Spartans winning at home in 1985 and the Sun Devils winning in Tempe in 1986. MSU last played in Sun Devil Stadium in 2012, when MSU beat TCU in the Buffalo Wild Wings Bowl.

## O'CONNOR WINS THIRD CHAMPIONSHIP:

Junior track star Leah O'Connor won her third Big Ten title in the 3,000-meter steeplechase at Purdue University, site of this year's conference championship. She took a commanding lead right out the gate and crossed the finish line in 10:06.10. "She's the best steepler in the conference, if not one of the best in the country," says Head Coach Walt Drenth. In addition, redshirt senior Kurt Schneider won the silver medal in the decathlon with a personal record of 7,431 points. Junior Tim Canfield won a bronze medal in the pole vault with a personal-best mark of 5.20m/17-0¾ ft. Redshirt junior Antonio James took bronze in the discus, winning his fourth Big Ten medal of his career.

*Track champion Leah O'Connor is the NCAA's top collegiate steeplechaser. ▼*



Philip Johnson/MSU Athletic Media Communications





# KEEP OUR PASSING LANES BEAUTIFUL.

They say beauty is fleeting. And with Regal's bold design, available all-wheel drive and more standard horsepower and torque than the BMW 328i, we think most people in the slow lane will agree. The new Buick Regal GS. Discover more at [buick.com](http://buick.com).



BUICK REGAL GS

©2013 General Motors. All rights reserved. Buick® Buick emblem® Regal®



BUICK. THE OFFICIAL VEHICLE OF SPARTAN ATHLETICS.







**SPARTANS  
WILL. POWER**  
A GLOBAL DAY OF SERVICE-  
POWERED BY SPARTANS  
4.12.14

We Made a Difference During  
**SPARTANS WILL. POWER**  
Global Day of Service on April 12

**1,243 Spartans**

98 locations

**4,958 hours of service**

**1 better world**

Thank you to the countless Spartans who gave their time and talents to make this year's SPARTANS WILL. POWER Global Day of Service a huge success. Your impact was felt at beaches, parks and schools; in blighted areas of downtown Detroit; at Habitat for Humanity projects and in numerous communities. Many alumni clubs were so inspired by the day's events that they are making community service a regular part of their Spartan experience.

To find an alumni club near you, visit [alumni.msu.edu](http://alumni.msu.edu).

It's just one more example of how Spartans make a difference every day, in communities all over the world.

**See a video about SPARTANS WILL. POWER activities**

[serviceday.msu.edu](http://serviceday.msu.edu)



2014

# SPARTANS

..... MAKE .....

# HEADLINES

• HOMECOMING •

MICHIGAN STATE UNIVERSITY

**HOMECOMING WEEK IS**

• SEPTEMBER 22-27, 2014 •

**Join us in East Lansing for a full week of events, including:**

Student Events – September 22 - 26

Grand Awards Gala – Thursday, September 25

MSU Homecoming Parade – Friday, September 26, at 6 p.m. in downtown East Lansing

Green and White Brunch – Saturday, September 27, Kellogg Center

MSU Families @ Homecoming Tailgate – Saturday, September 27, Auditorium Field by “The Rock”

College Tailgate Events – Saturday, September 27, MSU campus

Homecoming Football Game MSU vs. Wyoming – Saturday, September 27, Spartan Stadium

..... **GLOW GREEN** .....

Show your Spartan Spirit all week by swapping your front porch, window or any other light that can “glow” with a green light bulb to celebrate MSU’s Homecoming Week. Whether you’re on campus, in another state or around the world you can “Glow Green!”

*For more information on Homecoming activities and the “Glow Green” tradition, please visit: [homecoming.msu.edu](http://homecoming.msu.edu).*





# FOREST AKERS GOLF COURSES



-  lay at two of Michigan's premiere public golf courses.
-  ractice at our award-winning practice facility.
-  urchase your golf equipment and apparel from our two full-service pro shops where you'll find one of the largest selections of quality MSU logoed merchandise.

**20% OFF on 2014 Home Football Saturdays at West Golf Shop\***



[golf.msu.edu](http://golf.msu.edu) • 517-355-1635

West Course - 3535 Forest Rd., Lansing, MI 48910  
East Course - 2231 S. Harrison Rd., East Lansing, MI 48823

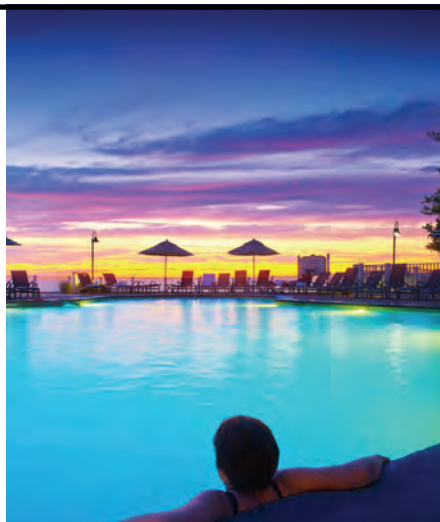
\*Excludes clearance items, special orders and golf equipment.



Timeless and Welcoming  
WITH SIMPLE SOPHISTICATION



**BOYNE  
HIGHLANDS**  
600 Highland Drive | Harbor Springs



Assured and Elegant  
IN A MAJESTIC LOCALE



**A RENAISSANCE GOLF RESORT**  
3600 Village Harbor Drive | Bay Harbor



Endless Possibilities  
FOR YOUR PLAYFUL SIDE



1 Boyne Mountain Road | Boyne Falls

 Much More than a Collection of Resorts | [BOYNE.COM](http://BOYNE.COM) | 800.462.6963





## THE DESTINATION FOR EXTRAORDINARY.

Want a winning experience? This is the place. A world-class casino with the latest slots, action-packed table games and star-studded entertainment. Relax in a luxury AAA four-diamond resort with indulgent dining and spa experiences. Unwind at a fun-filled waterpark and beautiful 18-hole golf course that are only moments away. Love having your expectations exceeded? Discover Michigan's finest casino and resort.



*Soaring Eagle*  
CASINO & RESORT®

**GETAWAY PACKAGES:** Book the perfect escape with special pricing offers.



Call 877.2.EAGLE.2  
or visit [SoaringEagleCasino.com](http://SoaringEagleCasino.com)







# ALMA MATTERS

## REGIONAL CLUBS

**CENTRAL OHIO** – Jan. 1: Some 20 Spartans kicked off the start of 2014 in Columbus, Ohio, where they watched the televised Rose Bowl game. Jan. 10-11: Many club members attended the Michigan State vs. Ohio State hockey games in OSU's Schottenstein Center. Feb. 20: Spartans gathered for their club's annual food drive and game watch with the Purdue Alumni Club. In all, 164 pounds of donated groceries were collected for the local food bank.



**SAN FRANCISCO BAY AREA** – Jan. 22: Over 125 Spartans gathered to network and spend time with Sparty at Google's San Francisco office. Keynote speaker, Janel Rutzen, gave a presentation on Sparty's history and the group raised over \$750 for its scholarship fund.



**SPACE COAST ALUMNI CLUB OF EAST CENTRAL FLORIDA** – Feb. 9: Nearly 25 Spartans met at the Vero Beach Polo Grounds to watch ponies, stomp the divots and tailgate with other alumni.

**OREGON AND SOUTHWEST WASHINGTON** – Jan. 25: More than 50 alumni enjoyed a day at the Utopia Vineyards, a boutique winery outside Portland. They watched the MSU vs. UM basketball game and sampled award-winning wines.



**EASTERN WAYNE COUNTY** – Feb. 1: MSU graduate Mark Rieth provided a sneak peak of Atwater In The Park, a brewery set to open soon. Coney dogs were prepared by

Mark Smith while Joe Grimm, MSU School of Journalism editor-in residence, talked with 75 Spartans about Detroit's take on its famous Coney Island hotdogs.



**WEST MICHIGAN** – Feb. 26: Over 750 Spartans gathered at the JW Marriott in Grand Rapids to participate in the 4th Annual Spartan Winter Tailgate. Coaches Mark Dantonio, Pat Narduzzi and Mark Staten as well as Athletics Director Mark Hollis were there for a post-Rose Bowl celebration. Alumnus John Shinsky, '74, MA '77 and PhD '93, was honored with the West Michigan Spartans' Legacy Award for his contributions to the community.



## METROPOLITAN WASHINGTON, DC – Feb. 6:

About 12 Spartans met for a networking event at Crios Modern Mexican Restaurant. Mar. 6: Some 16 Spartans gathered at Redline Gastrolounge for a networking event.

**UTAH** – Jan. 1: More than 55 Spartans got together at Legends Pub and Grill to watch the 2014 Rose Bowl game. ▼



## AUSTIN, TX – Jan. 21: The Austin Spartans E-Board met to start planning 2014 events.

Game watches, scholarship planning, fundraising, service events and a statewide gathering are all on the calendar. Jan. 24: Nearly 25 Spartans enjoyed a pre-game mixer and minor league hockey match as the Texas Stars took on the Grand Rapids Griffins.



## Constituent Associations

### SCHOOL OF HOSPITALITY BUSINESS – Jan. 28: ►

Some 50 Spartans traveled to Los Angeles to attend the Americas Lodging Investment Summit at the JW Marriott and NOKIA Theater. Alumnus and sports icon Magic Johnson joined the group. Feb. 7: The School of Hospitality Business Alumni Association and the school's student Hospitality Association put together a celebration of the program's 23rd anniversary while offering an estimated 300 destination auction packages.

### Alumni Interest Groups: LGBT ►

– Dec. 30: Around 100 Spartans met at The Gym Sports Bar in Santa Monica for MSU's LGBT Alumni Rose Bowl pep rally and mixer, made possible by the MSU Alumni Association and MSU's LGBT Resource Center.







## NEW BROAD GIFT HONORS MUSEUM'S FOUNDER

by Lois Furry

From its steely, futuristic tilts to its global and always unconventional exhibits, the magnetism of the Eli and Edythe Broad Art Museum at Michigan State University, now in its second year, is undeniable.

The Broad MSU recently received a \$5 million gift from The Eli and Edythe Broad Foundation to increase the exhibition endowment for the museum and to help fund art installations for the next five years. The gift honors the

*Michael Rush, (left) and President Lou Anna K. Simon (right) flank Edythe and Eli Broad inside the museum, which will benefit from a gift made in honor of Rush, museum director.*

museum's founding director, Michael Rush, for his leadership in creating the explorative exhibitions and programming that already have made the museum a center for questioning and understanding the modern world.

"Michael Rush is realizing the vision for Broad MSU, bringing contemporary artists from around the globe to East Lansing and drawing audiences from around the state, across the country and from all corners of the world," says Eli Broad.

"The exhibitions presented at the museum provide

opportunities for students and the community to experience art that they might otherwise never see, while simultaneously drawing new visitors to East Lansing.

"Edythe and I are pleased to recognize Michael Rush's leadership

in creating this unique institution and we wanted to ensure that the museum continues to push boundaries in the types of exhibitions it presents."

This new gift brings to \$33 million the total investment in Broad MSU made by alumnus Eli Broad and his wife, Edythe, in addition to significant gifts of art. The Broads were the catalyst for the museum, providing a \$28 million lead gift for the design and construction of Broad MSU's Zaha Hadid-designed building and establishing exhibition and operations endowments and a fund for acquisitions.

## EDITOR'S MESSAGE

Dear Readers,

I am the most fortunate editor I know. I have the pleasure of following long-time *MSU Alumni Magazine* Editor Bob Bao, who retired last spring.

Notice I didn't use the words "replace Bob Bao." That would be impossible. His knowledge, familiarity, acute memory and recall of MSU's important history and, of course, his insider expertise on Spartan Athletics, cannot be reproduced.

Though he's off perfecting his golf swing, he's still on the hook. Bob is keeping his Spartan press credentials and will continue to cover sports for the magazine. I can't imagine anyone better.

He is also paying forward his far-reaching knack for creating good will on and off campus. It's a legacy I've experienced repeatedly since joining the Spartan community in April.

I look forward to carrying the mantle of this award-winning, trend-setting magazine and hope to hear from you when you have great alumni stories to tell or you wish to weigh in on stories in this and future issues of the *MSU Alumni Magazine*.

Cordially,

*Paula M. Davenport*

Paula M. Davenport, *Editor*







**MICHIGAN STATE  
UNIVERSITY**

Broad College of Business  
Executive Development Programs

[edp.broad.msu.edu](http://edp.broad.msu.edu)



*Learn strategies to advance your career*

## Executive Leadership for Women

### Strategies to Enhance Success

**Oct. 15-16, 2014 & Nov. 11-12, 2014**

- Understand real and perceived gender differences and what the workplace rewards
- Practical, real world insights and advice for career advancement
- More than half the women attending Executive Leadership for Women advance their career within 6-12 months after participating in the program

**To learn more or to register contact Kristin St. Marie,  
[stmarie@broad.msu.edu](mailto:stmarie@broad.msu.edu) or 517-353-8711 ext 71005**



# ARE YOU MOVING?

Email us at: [msuaa@alumni.msu.edu](mailto:msuaa@alumni.msu.edu)

*Be sure to take your MSU Alumni Magazine along with you.*





## STATE'S STARS

**Eric H. Bauman**, '72, MA '76, Palo Alto, CA, has been



promoted to senior technical advisor at the Electric Power Research Institute. EPRI

assists electric-sector companies and organizations to address environmental, health and safety challenges through science and technology. Bauman has 35 years of experience in environmental management, regulatory affairs, research in industry and state government, and is a guest scientist at Jülich Research Centre, Germany. In the 1970s, he served on Michigan Governor Bill Milliken's Environmental Review Board.

**Joseph J. DeVito**, '92, Royal Oak, an attorney at



Howard & Howard, has been named "Deal Maker of the Year – Advisor

Category" in *Crain's Detroit Business* awards. He was honored for making top merger and acquisition deals. DeVito specializes in business, financial transactions and real estate. He previously served as assistant general counsel, responsible for mergers and acquisitions, for ThyssenKrupp in North America.

**Robert J. Pliska**, MBA '70, Birmingham, is managing



director of Sperry Van Ness/Property Investment Advisors, LLC. He has been

inducted into the *Midwest Real Estate News* Hall of Fame. He joins some of the biggest

names in the commercial real estate industry. He specializes in selling, financing, leasing and managing properties. In addition, he is a national speaker, author, radio guest, panelist and social media expert.

**Xian-He Sun**, MS '85 and '87, PhD '90, chair and professor of computer science at Chicago's Illinois Institute of Technology, has been named



a distinguished professor for his exceptional achievements in his field. His research delves into parallel and distributed processing, memory, software systems for big data and performance evaluation and optimization. Sun has published more than 200 research articles on computer science and communication and holds three patents in the U.S. and one in China.

**Geoffrey S. Gallinger**, '84, JD '87, an attorney and shareholder at Butzel Long, Birmingham, has been elected to the Board of Directors



of the Detroit Athletic Club. He has served on the Detroit Athletic Club Community Outreach Committee since 2007. He counsels clients on general business and corporate planning needs, real estate transactions and developments, acquisitions, leasing, financing, troubled asset acquisitions, loans and restructurings. He is a Gold Member of the Detroit Economic Club and has served as past board chair for The Salvation Army Detroit Metropolitan Advisory Board.

**Kristine L. Barann**, '88, has been promoted from vice



president of finance to president of Baker College of Allen Park. She brings more than

25 years of financial expertise and managerial experience in a variety of industries. She was previously involved on campus as an adjunct professor of accounting and served on the college's Board of Regents. The college serves more than 35,000 students on 12 campuses and three satellite locations.

**Aaron L. Davis**, '03, an attorney at Fraser Trebilcock in



Okemos has been appointed by the Ingham County Commission to a three-year term on the Board of

Directors of the Potter Park Zoo. He is a legal expert in the areas of labor, employment, civil rights and litigation. In his new role, he will review the zoo's operations, policies and procedures, making recommendations about the zoo's finances and capital improvements to the County Parks and Recreation Commission.

**Derek Byrd**, '12, has been appointed to the Board of



Directors for Communities in Schools of Metro Detroit. He presently chairs the

organization's marketing and public relations committee, guiding, rebranding and marketing efforts. Byrd is the marketing and inside sales manager for Evans Distribution System.

**Susan K. Flynn**, '84 and '05, Grand Ledge, has been named



vice president of operations at Siena Accountants CPA, PLLC. She joined the

firm in 1998 and variously served as an administrative assistant, office manager and tax preparer. She will focus on providing customer service and legal assistance for the firm's affiliates, Siena Wealth Advisors and Kicks Millbrook, PLLC.

**Brian Grant**, '03, Atlanta, GA, has been promoted to



managing director at Conway MacKenzie, Inc. He provides restructuring

and business assistance to troubled companies and their creditors on financial, operational and strategic issues. He previously worked with the recovery and reorganization group of Grand Thornton, LPP, specializing in crisis management and corporate restructuring for the automotive industry, both in the U.S. and Europe.

**Isaiah Dahlman**, '10, Allegan, has been hired as



a business development analyst for Perrigo, a consumer health-care

team. He'll be responsible for discovering areas for the company's future growth. Dahlman brings three years of experience as a sales engineer in the automotive industry and as a business development manager



for a corporate development company. At MSU, Dahlman was a four-year letter winner in basketball, a captain of the 2010 Final Four team and a Big Ten All-Academic Team recipient.

**Frank Fear,** '97, chief information officer and vice



president of Ancillary Services at Memorial Healthcare, Owosso,

has earned his professional certification from the College of Healthcare Information Management Executives. Launched in 2009, the entity is the only credentialing program that distinguishes health care IT executives from others in the industry.

**Rebecca Walz,** '94,



Bethlehem, PA, a director of development and public relations at Lehigh Valley public radio station, WDIY, has been hired

by Northampton Community College to direct alumni engagement and the college's annual fund. She previously worked for the college as an adjunct professor in distance learning and has served on its Board of Regents.

**Paul Fransway,** '72, an attorney and shareholder with



the Butzel Long law firm, Ann Arbor, has been named to "Who's Who of Franchise

Lawyers 2013." Fransway concentrates on franchise, trademark and unfair competition laws. As the main

counselor for a number of national franchisors, he helps with compliance of disclosure and registration requirements under the Federal Trade Commission and state laws. His expertise includes franchise contract enforcement, non-compete clauses, trademark infringement and post-termination remedies.

**Jeffrey D. Smith,** '76, Kalamazoo, has joined



Honigman Miller Schwartz and Cohn LLP as a partner in the firm's corporate and

litigation departments. He belongs to and has served as past vice chair of Business and Industry Risk Management Council of the National Marine Manufacturers Association. National and international manufacturers – including marine, automotive, furniture and consumer products companies are among his clients. He is a member of MSU's Presidents Club.

**Karen Blumenstein,** '84, Denver, CO, has received the



Flower & Stone's Dealmaker Award, presented by Commercial Real Estate Women

(CREW). She was honored for her extraordinary communication skills to negotiate transactions that advance development projects. She is an MSUAA Life Member.

**Jeff Sluggett,** '81, Grand Rapids, has been named a partner in the new law firm Bloom Sluggett Morgan, PC. The firm specializes in public

sector/municipal law, real estate, and riparian/water law. It represents clients throughout West Michigan and the state's Lower Peninsula.

**Renee Galicki,**

'98, Grand Rapids, has been



promoted to director of client services at Hanon McKendry. She joined

the organization as account supervisor in 2002—as senior client manager—after the firm's merger and rebranding as DOMOREGOOD. Before that she was senior account executive at the Detroit office of BBDO, an advertising agency.

**Saleha R. Mohamedulla,**

'99, Royal Oak, has been named a shareholder at the Howard & Howard Attorneys, PLLC. Mohamedulla works in the areas of intellectual property law, focusing on patent prosecution



and patent infringement litigation related to chemical and mechanical technologies.

She previously served in such positions as corporate counselor at The Dow Chemical Company and as an examiner for the U.S. Patent and Trademark Office.



## State's Stars Submissions:

*MSU Alumni Magazine  
Michigan State University  
Spartan Way  
535 Chestnut Rd., Room 300  
East Lansing, MI 48824*

*or daven125@msu.edu*

*All entries are subject to editorial review.*



Official Coffee of  
**SPARTAN ATHLETICS**

**Great Tasting Food.  
Amazing Coffee.**



**Over 200 Michigan Locations.  
3 in East Lansing!**





# MSU FAMILIES

## @ HOMECOMING

Sponsored by the MSU Alumni Association  
and the Association of Future Alumni.

**Saturday,  
September 27**

Join the MSU Alumni Association and the Association of Future Alumni for a family tailgate, where you'll enjoy food, fun, games and prizes prior to the MSU Homecoming football game.

**Purchase your tailgate package before  
September 5, 2014 at**  
[alumni.msu.edu/familytailgate](http://alumni.msu.edu/familytailgate)

## Go Green, Go White, Go Good Health

**Creative Wellness has been helping Spartans achieve good health through massage, chiropractic, acupuncture and well-being classes for over 20 years. We're open 7 days a week, 6 evenings and we're located in East Lansing. Make an appointment at Michigan's largest complementary health center today. You'll be happy you did.**



2045 Abbot Road | East Lansing, MI 48823 | 517-351-9240 | [www.creativewellness.net](http://www.creativewellness.net)  
*Serving Spartans Since 1990*



# Take an in-depth look at the MSU student experience—from the inside out.

During the fall 2013 semester, an MSU film crew, including a team of student producers, documented the lives of nine Spartan undergraduates. In the process, they captured the essence of the Michigan State experience.

See their stories at  
[msu.edu/insideout](http://msu.edu/insideout).

MICHIGAN STATE  
UNIVERSITY



# INSIDE OUT

MSU PRESIDENT'S REPORT





## OBITUARIES

### '30s

*Mary E. (Boettcher) Price*, '35, of Milwaukee, WI, Oct. 20, age 99.  
*Gretchen E. Bock*, '37, of Phoenix, AZ, Mar. 25.  
*William E. Pitts*, '38, of Cadillac, Oct. 8, age 98.  
*Horace F. Robinson*, '38, of Chelsea, Nov. 27, age 96.  
*Helen L. (Reid) Weaver*, '38, of Laingsburg, Oct. 30, age 96.  
*Arnold E. Ahlberg*, '39, of Iron River, Feb. 18, age 97.  
*Harper L. Camp*, '39, of Midland, Dec. 5, age 98.  
*Florence R. (Carter) Drullinger*, '39, of Holt, Mar. 18, age 98.  
*Burnie D. Despelder*, '39, of Greenville, Sep. 22, age 95.  
*Faye (Nilson) Gorham*, '39, of Jackson, Feb. 10, age 95.  
*Alvin J. Kieft*, '39, of Stow, OH, May 4, age 97.  
*Jack I. Northam*, '39, of Kalamazoo, Dec. 9, age 98.

### '40s

*Julia M. (Davies) Acker*, '40, of Kawkawlin, Aug. 9, age 93.  
*George R. Grenzke*, '40, of Grosse Pointe Woods, Nov. 28, age 95.  
*Lyle S. Knopf*, '40, of Palm City, FL, Mar. 29, age 95.  
*Dolores A. (Bardelli) Lynch*, '40, of Fair Haven, NJ, Mar. 10, age 94.  
*G. Samuel Yeiter*, '40, of Rockford, Mar. 25, age 96.  
*Donald E. Berger*, '41, of Oklahoma City, OK, Jan. 7, age 94.  
*Allan A. Houghtaling*, '41, of Reese, Apr. 5, age 94.  
*Robert W. Howorth*, '41, of Travelers Rest, SC, Oct. 24.  
*Chester E. Kennedy*, '41, of Lansing, Mar. 10, age 98.  
*Harrison B. Siegle*, '41, of Westwood, MA, Apr. 13, age 95.  
*James H. Steele*, '41, of Houston, TX, Nov. 10, age 100.  
*Richard G. Barstow*, '42, of Sedona, AZ, Dec. 8, age 93.  
*Rodgers H. Cook*, '42, of Vancouver, WA, Mar. 26, age 93.  
*Bernard G. Miller*, '42, of Saint Cloud, FL, Aug. 8, age 92.  
*Duane H. Perry*, '42, of Holland, Oct. 18, age 94.  
*Robert L. Early*, '43, of Marco Island, FL, Mar. 4, age 94.  
*Robert J. Brown*, '45, of Delavan, WI, Mar. 15, age 90.  
*Quintin C. Metzger*, '45, of Oshkosh, WI, Mar. 2, age 96.  
*Gerald C. Delagardelle*, '46, of Gilbertville, IA, Aug. 9.  
*Marie R. (Reeves) Hilding*, '46, of Lansing, Apr. 8, age 89.  
*Shirley J. (Anderson) Means*, '46, of Kalamazoo, Nov. 9.  
*Roberta E. (Malone) Stanish*, '46, of Drummond Island, Feb. 18, age 89.  
*Joyce E. (Duttweiler) Gorte*, '47, of Winter Haven, FL, Nov. 11, age 87.  
*Joseph A. Greenhoe*, '47, of Putney, VT, Mar. 29, age 90.  
*Morris M. Hathaway*, '47, of Manhattan, MT, Mar. 12, age 91.  
*Alonzo H. Hilton-Shockley*, '47, of Port Jefferson Station, NY, Feb. 11, age 87.  
*William K. Monroe*, '47, of Salt Lake, UT, Oct. 21, age 91.  
*LeRoy L. Peterson*, '47, of Chapel Hill, NC, Jun. 18, age 91.  
*Hugh F. Travis*, '47, of Virginia Beach, VA, Nov. 28, age 91.  
*Calvin A. Bollwinkel*, '48, of Fair Oaks, CA, Apr. 17, age 88.  
*William S. Brennenman*, '48, of Louisville, CO.  
*James T. Burnett*, '48, of Novi, Apr. 5, age 88.  
*Charles D. Burton*, '48, of Williamsburg, Mar. 27, age 90.  
*Robert H. Davis*, '48, of Okemos, Dec. 1.  
*Stuart L. DeWitt*, '48, of Greenville, Nov. 7, age 88.  
*Clayton C. Fenton*, '48, of Fowlerville, Feb. 25, age 90.  
*Homer J. Fulton*, '48, of North Canton, OH, Nov. 15, age 90.  
*Leland P. Funk*, '48, of Niles,

Feb. 13, age 92.  
*Willard S. Garwood*, '48, of Southfield.  
*Caroline M. (Quandt) Jane*, '48, of Midland, Jun. 7, age 87.  
*Robert L. Longyear*, '48, of Rochester, NY, Nov. 23, age 91.  
*Allan G. Martin*, '48, of Wichita, KS, Feb. 12, age 90.  
*Ralph E. Raymond*, '48, of Toledo, OH, Dec. 23, age 91.  
*Priscilla (Godwin) Reed*, '48, of Naples, FL, Feb. 6, age 88.  
*Ruth J. (Fuerstenau) Reid*, '48, of Eaton Rapids, Jul. 21, age 87.  
*Earl J. Robertson*, '48, of Teachey, NC, Mar. 8, age 88.  
*Reba M. (Whitmarsh) Rudolph*, '48, of Traverse City, Mar. 1, age 87.  
*Ruth S. (Boyd) Stein*, '48, of Grand Rapids, Feb. 5.  
*Robert A. Vonsternberg*, '48, of Minneapolis, MN, Dec. 21, age 95.  
*Laurence H. White*, '48, of W. Palm Beach, FL, Feb. 11, age 86.  
*Dorothy E. (Milliken) Winnard*, '48, of Harbor Springs, Dec. 14, age 91.  
*Kenneth D. Winter*, '48, of DeWitt, Apr. 2, age 90.  
*Merle J. Altstiel*, '49, of Ft. Wayne, IN, Nov. 19, age 89.  
*Stuart H. Bogue*, '49, of Southfield, Apr. 15, age 90.  
*Charles K. Brooks*, '49, of Wyoming, Mar. 17, age 89.  
*Barbara J. (McGeachy) Bruno*, '49, of Hamtramck, Jun. 13, age 85.  
*Gerald A. Clark*, '49, of Midland, Apr. 12, age 89.  
*Betty C. (Bigford) Cole*, '49, of Avon, CT, Nov. 16, age 86.  
*Ellwin I. Coulston*, '49, of Norcross, GA, Nov. 9, age 89.  
*Lowell O. Culver*, '49, of Dallas, TX, Mar. 18, age 90.  
*Geraldine M. (Dexter) Gallun*, '49, Feb. 25, age 87.  
*Joanne (Beattie) Gruschow*, '49, of Okatie, SC, Mar. 26, age 86.  
*Charles J. Guenther*, '49, of Lansing, Dec. 8, age 88.  
*Merlin A. Johnson*, '49, of

Okemos, Feb. 25, age 88.  
*Kenneth E. Larzelere*, '49, of Flint, Dec. 1, age 89.  
*Malcolm N. McNeil*, '49, of Lansing, Feb. 18, age 86.  
*Robert H. McRae*, '49, of Loudon, TN, Nov. 23, age 89.  
*Katherine M. (Carter) Miller*, '49, of Wyoming, Mar. 16, age 86.  
*Stanley J. Niec*, '49, of Orlando, FL, Mar. 23, age 95.  
*Ralph G. Nye*, '49, of Battle Creek, Apr. 14, age 85.  
*Alice M. (Gabriel) Piper*, '49, of Burlington, MA, Sep. 9, age 87.  
*Betty A. (Humphreys) Reeder*, '49, of Miami, FL, Jan. 30, age 87.  
*Herman Rochwarg*, '49, of Yarmouth, ME, Jul. 19, age 87.  
*George L. Rock*, '49, Feb. 26, age 88.  
*Frances L. (Gilpin) Rubl*, '49, of Midland, Feb. 7.  
*Guerdon E. Schumacher*, '49, of Beaverton, Dec. 9, age 85.  
*Russell Spalding*, '49, of Britton, Jul. 10, age 89.  
*Herbert A. Speerstra*, '49, of Phoenix, AZ, Feb. 15, age 87.  
*Roger K. Strong*, '49, of Ft. Washington, PA, Mar. 25, age 89.

### '50s

*James T. Brodie*, '50, of Encino, CA, Jun. 8, age 86.  
*William J. Cameron*, '50, of Traverse City, Oct. 5, age 84.  
*Louis D. Carufel*, '50, of Marysville, Feb. 4, age 91.  
*William G. Clemons*, '50, of Jackson, Apr. 4, age 85.  
*John A. Cronander*, '50, of Thousand Oaks, CA, Feb. 24, age 85.  
*John E. Eckenrode*, '50, of Traverse City, Apr. 9, age 86.  
*Barbara J. (Wissinges) Goold*, '50, of Schenectady, NY, Dec. 26, age 85.  
*Donald F. Haggard*, '50, of Louisville, KY, Mar. 8, age 86.  
*Wayne J. Harman*, '50, of Los Angeles, CA, Jan. 23, age 91.  
*Sheldon B. Hedges*, '50, of



Barryton, Feb. 6, age 88.  
*Franklin W. Herrick*, '50, of Shelton, WA, Dec. 30, age 91.  
*Sheldon J. Jolgren*, '50, of Bloomfield Hills, Aug. 14, age 86.  
*Jean (Fogle) Leonard*, '50, of Laingsburg, Mar. 24, age 88.  
*Kermit L. Morgan*, '50, of Howell, Feb. 11, age 89.  
*Thomas W. Myers*, '50, of Nashville, Sep. 4, age 88.  
*Mogens C. Nielsen*, '50, of Kawkawlin, Feb. 25, age 87.  
*Paul A. Phillips*, '50, of Wakefield, LA, Feb. 12, age 86.  
*Louis O. Schulte*, '50, of Santa Ana, CA, Jun. 5, age 84.  
*William J. Seibert*, '50, of Waynesville, NC, Sep. 27, age 89.  
*Wayne B. Siefert*, '50, of Scott AFB, IL, Mar. 20, age 88.  
*Louis R. Somers*, '50, of Battle Creek, Nov. 2, age 87.  
*Willard S. Splan*, '50, of Petoskey, Dec. 15, age 86.  
*Edmond J. Whalen*, '50, of Wood Dale, IL.  
*Eugene A. York*, '50, of Spring Arbor, Feb. 3, age 88.  
*Ernest L. Bockstanz*, '51, of Portage, Aug. 31, age 89.  
*Bonnie J. (Buchtel) Cataldo*, '51, of Evanston, IL, Jan. 8, age 84.  
*George A. Champagne*, '51, of Laingsburg, Nov. 24, age 88.  
*Robert H. Cook*, '51, of Harbor Springs, Mar. 11, age 84.  
*Robert S. Crandall*, '51, of Schenectady, NY, Dec. 2, age 90.  
*Burton L. Essex*, '51, of Hugo, MN, Feb. 19, age 84.  
*William R. Guntrum*, '51, of Livermore, CA, Jan. 22, age 92.  
*Donald L. Harris*, '51, of Great Lakes, IL, Dec. 7, age 89.  
*Howard J. Hildenbrand*, '51, of Webster, NY, Feb. 2, age 91.  
*Eugene J. Kendra*, '51, of Muskegon, Mar. 27, age 84.  
*Caroline M. (Schumann) McCollom*, '51, of Tucson, AZ, Mar. 17, age 83.  
*Frank H. Stevens*, '51, of Novi, Apr. 8, age 86.

*Harold A. VanderWall*, '51, of East Lansing, Feb. 14, age 88.  
*Gerald D. Vogt*, '51, of Sturgis, Feb. 20, age 88.  
*Leona M. (Hodges) Weaner*, '51, of Falmouth, MA, Oct. 17, age 83.  
*Henry Adamski*, '52, of Harrison, Feb. 9, age 88.  
*Douglas L. Allen*, '52, of Roscommon, Dec. 17, age 82.  
*Robert F. Bollens*, '52, of Phoenix, AZ, May 13, age 85.  
*Carol W. (Wheeler) Brenner*, '52, of Ithaca, NY, Feb. 25, age 83.  
*Howard D. Bryan*, '52, of Bellevue, WA.  
*Marilyn L. (Dressel) Buckingham*, '52, of Big Rapids, Nov. 27, age 83.  
*Patricia A. Caughey*, '52, of Meriden, CT.  
*Carlos D. Fetterolf*, '52, of West Hartford, CT, Mar. 22, age 87.  
*Carl W. Hall*, '52, of Arlington, VA, Apr. 18, age 89.  
*William H. Houff*, '52, of Redwood City, CA, Jan. 26, age 85.  
*Barbara A. Karickhoff*, '52, of Memphis, TN, Dec. 7, age 82.  
*Virginia (O'Brien) Kelly*, '52, of Roswell, GA, Nov. 24, age 83.  
*Robert E. Kirkwood*, '52, of Rochester, NY, Apr. 13, age 84.  
*William H. Morgan*, '52, of Warren, Mar. 21, age 84.  
*Lloyd D. Morris*, '52, of Mason, Dec. 9, age 82.  
*Norman R. Piersma*, '52, of Ellenton, FL, Feb. 9, age 86.  
*E. Wilson Purdy*, '52, of Saint Petersburg, FL, Feb. 13, age 94.  
*Cecil E. Purifoy*, '52, of Muncie, IN, Aug. 20, age 85.  
*Jack C. Sanderson*, '52, of Fremont.  
*Harold E. Schlichting*, '52, of Port Sanilac, Dec. 10, age 87.  
*Nathan L. Shipkowitz*, '52, of Waukegan, IL.  
*Patricia A. (Darling) Shrode*, '52, of Huntington Woods, Feb. 25, age 84.  
*Martha J. (Matkin) Stephens*,

'52, of Gillette, WY, Sep. 4, age 83.  
*Beverly M. (Crosby) Sweet*, '52, of East Lansing, Apr. 11, age 83.  
*Frank A. Topper*, '52, of Philadelphia, PA, Mar. 16, age 83.  
*Edwin J. Wolff*, '52, of St. Clair Shores, Oct. 28.  
*Charles A. Bashaw*, '53, of Geneva, IL, Apr. 15, age 92.  
*Dennis E. Condon*, '53, of Sarasota, FL, Dec. 4, age 82.  
*William A. Cromarty*, '53, of Westfield, NJ, Feb. 12, age 87.  
*Agnes T. (Turner) Emery*, '53, of Okemos, Oct. 16, age 82.  
*Charles F. Gibbs*, '53, of Rochester, Nov. 25, age 82.  
*Richard T. Hanley*, '53, of La Mesa, CA, Nov. 6, age 92.  
*Patricia A. (Wright) Lavra*, '53, of Lansing, Feb. 3, age 83.  
*Robert J. Lewis*, '53, of Traverse City, May 23, age 86.  
*Janet C. (Boylan) Logan*, '53, of Apopka, FL, Mar. 10, age 82.  
*Richard L. Lord*, '53, of Canada, Mar. 9, age 83.  
*Roger J. Peters*, '53, of San Gabriel, CA, Sep. 21, age 83.  
*Joseph C. Stevens*, '53, of New Haven, CT, Feb. 7, age 84.  
*Ronald Baisley*, '54, of San Jose, CA, Jan. 30, age 81.  
*Fred Copple*, '54, of Williamston, Nov. 16, age 82.  
*Richard A. Davidson*, '54, of Lauderdale By The Sea, FL, Mar. 17, age 83.  
*Albert W. Erickson*, '54, of Seattle, WA, Oct. 27, age 84.  
*William T. Hollister*, '54, of Warren, Dec. 23, age 83.  
*Irving F. Keene*, '54, of Franklin, Aug. 2.  
*Eugene A. Lazarz*, '54, of Saginaw, Dec. 1, age 85.  
*Jim G. Malik*, '54, of San Diego, CA, Apr. 17, age 85.  
*George P. Messenger*, '54, of Fort Lauderdale, FL, Nov. 14, age 81.  
*Norbert Milanowski*, '54, of Buffalo, WY, Feb. 14, age 81.  
*Manley F. Robinson*, '54, of Canada, Dec. 6, age 91.

*Millard F. Rogers*, '54, of Cincinnati, OH, Mar. 25, age 81.  
*Terry L. Spielmaker*, '54, of Grand Rapids.  
*Jack M. Crouner*, '55, of Louisville, KY, Feb. 27, age 81.  
*John A. Furry*, '55, of Saint Johns, Nov. 11, age 81.  
*Ilona (Planken) Herlinger*, '55, of Tacoma, WA, Jan. 22, age 80.  
*William C. Kirkey*, '55, of Millsboro, DE, Nov. 16, age 82.  
*Robert F. McCullough*, '55, of Paoli, PA, Dec. 31, age 80.  
*Clinton P. McGann*, '55, of Green Bay, WI, Mar. 19, age 87.  
*Janice L. Ralva*, '55, of Holland, Sep. 9, age 80.  
*Karl E. Rundquist*, '55, of Okemos, Feb. 24, age 80.  
*Margaret G. Tangenberg*, '55, of Washington, DC, Nov. 12, age 80.  
*Edward R. Berneike*, '56, of Cleveland, OH, Feb. 18, age 79.  
*Wesley B. Carlson*, '56, of Lake Orion, May 24, age 84.  
*Jean M. Dalrymple*, '56, of Flint, Aug. 16, age 88.  
*Frank C. Hagerty*, '56, of Incline Village, NV, Mar. 18, age 79.  
*Thomas E. James*, '56, of Dyer, IN, Feb. 12, age 82.  
*George W. Kielwasser*, '56, of Ypsilanti, Mar. 2, age 83.  
*Barry E. Lloyd*, '56, of Tampa, FL, Sep. 22, age 81.  
*Patricia M. (Fuehrer) McKeown*, '56, of Ann Arbor, Nov. 7, age 79.  
*Donald E. Moffatt*, '56, of Mesa, AZ, Feb. 1, age 79.  
*Barbara A. (Clements) Needham*, '56, of South Bend, IN, Nov. 27, age 79.  
*Barbara L. (Brines) Peterson*, '56, of Midland.  
*Clifford E. Pickett*, '56, of Port Huron, Mar. 11, age 82.  
*James G. Pletcher*, '56, Nov. 9, age 83.  
*Maxwell A. Robinette*, '56, of Sparta, Mar. 10, age 79.  
*Lowell R. Rudd*, '56, of Mason, Nov. 22, age 80.



*Marilyn J. (Bryn) Sommerfeldt*, '56, of Elk Rapids, Jun. 25, age 78.  
*Theodore F. Whitmoyer*, '56, of Idaho Falls, ID, Nov. 11, age 87.  
*Maura M. (Lyons) Bean*, '57, of San Marcos, CA, Jun. 14, age 87.  
*Robert Casadonte*, '57, of Midland, Mar. 17, age 84.  
*Robert T. Cottrill*, '57, of Venice, FL, Mar. 2, age 78.  
*Jean (Ferguson) Dibbell*, '57, of Pasadena, MD, Mar. 10, age 78.  
*Richard L. Diffenderfer*, '57, of Mesa, AZ, Dec. 12, age 85.  
*Gaylen L. Easter*, '57, of Southfield, Dec. 7, age 84.  
*Paul Fowler*, '57, of Jackson, Dec. 11, age 85.  
*Ronald J. Fritch*, '57, of Port Huron, Mar. 6, age 78.  
*Martin A. Gruber*, '57, of Chelmsford, MA, Nov. 18, age 77.  
*Barbara J. (McLean) Hacker*, '57, of Bonita Springs, FL, Nov. 3, age 78.  
*James K. Iverson*, '57, of Napa, CA, Mar. 14, age 78.  
*Livingstone Latham*, '57, of Lansing, Feb. 25, age 83.  
*Lawrence G. Lyman*, '57, of Sulphur, LA, Mar. 18, age 79.  
*Alan R. Maar*, '57, of Lansing, Nov. 19, age 78.  
*Leland S. Nemechek*, '57, of Creswell, OR, Nov. 22, age 80.  
*Joseph F. Oberle*, '57, of San Diego, CA, Oct. 27, age 77.  
*Faye F. (Fitzgerald) Pick*, '57, of Mount Prospect, IL, Apr. 17, age 78.  
*Theodore C. Piotrowicz*, '57, of East Lansing, Dec. 8, age 83.  
*Alan G. Toxopeus*, '57, of Winchester, VA, Dec. 2, age 77.  
*Donald J. VanKampen*, '57, of New Port Richey, FL, Feb. 11, age 79.  
*Bruce A. Clark*, '58, of Jackson, Feb. 20.  
*Dorothy M. (Fisher) Flounders*, '58, of Sandusky, OH, Feb. 1, age 77.  
*Clara A. Goyings*, '58, of Plainwell, Dec. 6, age 78.

*John D. Hottell*, '58, of Decatur, IN, Jan. 5, age 78.  
*Walter W. Mateer*, '58, of Traverse City, Oct. 19, age 82.  
*Dixie L. (Sherwood) Ridley*, '58, of Green Valley, AZ, Nov. 11, age 77.  
*Donald J. VanderWall*, '58, of Mercer Island, WA, Feb. 11, age 91.  
*David L. Braendle*, '59, of Bay City, Feb. 2, age 80.  
*Arlene J. DeYoung Smith*, '59, of San Diego, CA, Feb. 14, age 80.  
*Charles E. Elliott*, '59, of Ithaca, NY, Mar. 10, age 85.  
*Linda J. (Vermillion) Fedewa*, '59, of Dimondale, Jan. 9, age 77.  
*Merry A. Gregory-Barrows*, '59, of Grand Rapids, Feb. 3.  
*Jeannine B. (Bintz) House*, '59, of Fremont, OH, Nov. 18, age 76.  
*Jo An Huff*, '59, of Oswego, NY, Dec. 9, age 84.  
*Raymond A. Lablanc*, '59, of Carnation, WA.  
*Charles L. Lang*, '59, of St. Clairsville, OH, Nov. 7, age 81.  
*John W. Lavery*, '59, of Richmond, VA, Apr. 13, age 86.  
*Ronny R. Merlington*, '59, of Sand Lake, Apr. 13, age 76.  
*Frank E. Olewinski*, '59, of Grand Rapids, Apr. 16, age 80.  
*Duane D. Patrick*, '59, of Saranac, Feb. 7, age 77.  
*Richard E. Schaufelberger*, '59, of Detroit.  
*William J. Slaughter*, '59, of Spring Lake, Aug. 23, age 83.  
*Hugh E. Smyth*, '59, of Williamston, Nov. 1, age 80.  
*James F. Walsh*, '59, of Lake Geneva, WI, Mar. 20, age 76.  
*Radford R. Whiteman*, '59, of West Bloomfield, Aug. 11, age 76.

**'60s**

*John N. Battenberg*, '60, of Scottsdale, AZ, Jul. 8, age 81.  
*Nancy J. (Mack) Eagan*, '60, of Boca Raton, FL, Jan. 23, age 75.  
*John T. Goodman*, '60, Mar. 14, age 78.  
*Michael N. Hoechstetter*, '60, of

Powell, OH, Jul. 7, age 82.  
*Stephen D. Oltmann*, '60, of Fairfax, VA, Oct. 31, age 75.  
*Lyla J. (Miller) Rodgers*, '60, of Hillsdale, Feb. 8, age 74.  
*Dennis G. Rugg*, '60, of Indialantic, FL, Feb. 17, age 77.  
*Chaturbhuj S. Sisodia*, '60, of St. Paul, MN, Mar. 22, age 79.  
*William G. Trappen*, '60, of Thurmont, MD, Nov. 15, age 79.  
*Barbara J. Biebrich*, '61, of Washington, DC, Sep. 19, age 74.  
*Susan J. Binder*, '61, of Dearborn, Nov. 4, age 74.  
*Bernard H. Burke*, '61, of Latham, NY, Feb. 11, age 80.  
*Christian S. Ciampaglia*, '61, of Melbourne, FL, Oct. 24, age 81.  
*John H. Fleming*, '61, of Rancho Mirage, CA, Feb. 10, age 75.  
*Stephen G. Gardner*, '61, of Sarasota, FL, Aug. 15, age 73.  
*Joseph R. Hannah*, '61, of Schenectady, NY, Nov. 29, age 78.  
*Norman E. Harris*, '61, of Brevard, NC, Jun. 23, age 73.  
*Jon E. Hultman*, '61, of La Grange, IL.  
*Sam A. Oakland*, '61, of Portland, OR, Mar. 27, age 80.  
*Roger R. Promer*, '61, of Lansing, Apr. 22, age 76.  
*Stanley C. Brown*, '62, of Scottsdale, AZ, Feb. 26.  
*J. Ronald Castell*, '62, of Stamford, CT, Oct. 31, age 75.  
*Chester P. Davis*, '62, of Saint Augustine, FL, Feb. 17, age 79.  
*Hillar J. Falk*, '62, of Orlando, FL, Nov. 30, age 75.  
*Benjamin C. Hassenger*, '62, of Lansing, Nov. 28, age 88.  
*David E. Large*, '62, of Schenectady, NY, Sep. 3, age 72.  
*Roger C. MacLeod*, '62, of Norwood, MA, Jan. 29.  
*Arnold N. Magnuson*, '62, of Estero, FL, Nov. 1.  
*Mary Jo (Humphreys) McBride*, '62, of Little Rock, AR, Feb. 26, age 93.  
*Larry D. Schultz*, '62, of Stevensville, May 29, age 73.

*Marjorie W. Sheneman*, '62, of East Lansing, Mar. 24, age 92.  
*Robert L. Spangler*, '62, of Oakland, CA, Jan. 16, age 75.  
*James E. Wall*, '62, of Mississippi State, MS, Apr. 7, age 86.  
*Robert L. Entorff*, '63, of Albert Lea, MN, Nov. 17, age 90.  
*James L. Fyke*, '63, of Springfield, IL, Nov. 19, age 77.  
*Margaret Ann (Taylor) Gibbs*, '63, of Southfield, Oct. 8, age 86.  
*James H. Graffius*, '63, of The Plains, OH, Sep. 2, age 85.  
*Kenneth L. Houskamp*, '63, of Zeeland, Nov. 2, age 76.  
*Evald Kreslins*, '63, of Grand Rapids, Apr. 15, age 74.  
*Ardyce A. (Colbry) Morford*, '63, of Grayling, Oct. 31, age 73.  
*Luther L. Peninger*, '63, of Tulsa, OK, Oct. 22, age 81.  
*Duane A. Wagner*, '63, of Jackson, Dec. 29, age 76.  
*Donalda M. (MacLean) Warner*, '63, of Haslett, Aug. 3, age 96.  
*Wayne E. White*, '63, of Auburn Hills, Mar. 20, age 74.  
*Thomas M. Wondergem*, '63, of St. Paul, MN, Mar. 12, age 73.  
*Philip A. Ambis*, '64, of Brooklyn, Mar. 17, age 75.  
*John W. Angell*, '64, of Okemos, Dec. 17, age 73.  
*Douglas J. Chapman*, '64, of Midland, Nov. 5, age 71.  
*John W. Chopard*, '64, of Cadillac, Nov. 13, age 80.  
*Joseph L. Chylinski*, '64, of Detroit, Oct. 21.  
*James H. Cooper*, '64, of Sun City West, AZ, Mar. 6, age 79.  
*Granville J. Cross*, '64, of Greensboro, NC, Mar. 30, age 78.  
*John R. Fehsenfeld*, '64, of Hastings, Feb. 1, age 83.  
*Maryhelen Feighner*, '64, of Marysville, Oct. 11, age 93.  
*Clarence J. Frazier*, '64, of New Vienna, OH, Jun. 8, age 89.  
*Chyde E. Letarte*, '64, of Whitehall, Mar. 28, age 75.  
*William H. Marshall*, '64, of



Lansing, Dec. 3, age 74.  
**John D. Panks**, '64, of Surprise, AZ.  
**Ruth C. (Hickman) Ritchie**, '64, of Paris, Mar. 13, age 88.  
**Anne L. (Douglas) Shaw**, '64, of Canada, Oct. 11, age 77.  
**Jacqueline E. (Jucius) Shiker**, '64, of Boulder, CO, Aug. 31, age 70.  
**David E. Smart**, '64, of Lansing, Mar. 26, age 76.  
**Clifford J. Warle**, '64, of Prescott, Nov. 13, age 70.  
**Lawrence C. Baker**, '65, of Minneapolis, MN, Jul. 14, age 69.  
**Judy L. (Maleitzke) Devine**, '65, of Jackson, Feb. 5, age 71.  
**Bessie M. Hetrick**, '65, of DeWitt, Nov. 24, age 91.  
**Bruce J. Hoesman**, '65, of Paramount, CA, Apr. 16, age 71.  
**David L. Milanowski**, '65, of Grand Rapids, Mar. 25, age 77.  
**Louis J. Morgan**, '65, of Lansing, Apr. 6, age 76.  
**David K. Musser**, '65, of Alburtis, PA, Mar. 28.  
**Edward M. Nystrom**, '65, of Okemos, Nov. 12, age 82.  
**Robert L. Parsons**, '65, of Big Rapids, Apr. 3, age 70.  
**Betty V. (Visscher) Rycenga**, '65, of Spring Lake, Mar. 13, age 86.  
**Sarah E. (Wilmer) Saum**, '65, of White Lake, Aug. 22, age 70.  
**Ronald L. Skorich**, '65, of Placentia, CA, Feb. 25, age 76.  
**Marvin R. Wilbur**, '65, of Jenison, Feb. 14, age 70.  
**Linda K. (Scott) Brown**, '66, of Troy, Mar. 24, age 69.  
**William A. Burdette**, '66, of Windham, NH, Feb. 3, age 69.  
**Richard W. Calkins**, '66, of Ludington, Nov. 29, age 74.  
**Bruce G. Carlson**, '66, of Park Forest, IL.  
**J. Ronald Esak**, '66, of Hawthorne, NJ, Jan. 27, age 69.  
**Fredric D. Frank**, '66, of Maitland, FL.  
**Paula J. (Nugent) Greene**, '66, of Cadillac, Aug. 17, age 68.  
**Ira W. Hutchison**, '66, of

Marquette, Mar. 7.  
**Jane (Spousta) Knight**, '66, of St. Johns, Feb. 18.  
**Bert T. Locke**, '66, of Oberlin, OH, Mar. 26, age 68.  
**Robert M. Lynas**, '66, of Spring Lake, Dec. 15, age 88.  
**Francis P. Noe**, '66, of Atlanta, GA, Aug. 8, age 74.  
**Lola A. (Miller) Olsen**, '66, of Greenbelt, MD, Apr. 19, age 70.  
**Bruce A. Parke**, '66, of Scottsdale, AZ, Apr. 14, age 70.  
**George J. Ross**, '66, of Rochester, Mar. 19.  
**Heidi R. Schmid**, '66, of Fort Lauderdale, FL.  
**Robert A. Sinnott**, '66, of Oak Creek, WI, Mar. 2, age 113.  
**Lloyd A. Trinklein**, '66, of Shippensburg, PA, Feb. 2, age 87.  
**Hector A. Bultynck**, '67, of Clinton Township, Mar. 5, age 68.  
**Thomas E. Harmon**, '67, of Coldwater.  
**Edward R. Herzberg**, '67, of Saginaw, Nov. 24, age 70.  
**Alyce (Lee) Hirschi**, '67, of Chicago, IL, Nov. 21, age 68.  
**Jerry F. Janssen**, '67, of North Chicago, IL, Feb. 5.  
**Fredric R. Marria**, '67, of West Bloomfield, Dec. 19, age 68.  
**Gerald L. Schertz**, '67, of Roanoke, VA.  
**Andrew F. Sikula**, '67, of South Charleston, WV, Jun. 4, age 68.  
**James R. Sutton**, '67, of Grand Ledge, Feb. 7, age 69.  
**Linda M. Balog**, '68, of Allen Park, Mar. 29, age 67.  
**Leslie M. Dawson**, '68, of Lowell, MA, Dec. 3, age 80.  
**Michael C. Greenisen**, '68, of Cape Canaveral, FL, Oct. 13, age 75.  
**Bruce H. Grimm**, '68, of Cheboygan, Mar. 2, age 70.  
**Bernice F. (Bruckman) Johnston**, '68, of Lansing, Nov. 9, age 67.  
**Howell T. Jones**, '68, of Petersburg, VA, Jan. 25, age 80.  
**Ravi K. Mathur**, '68, of Springfield, IL, Nov. 25, age 72.  
**John J. Mayo**, '68, of Pearl River,

NY, Feb. 25, age 66.  
**John E. McCluskey**, '68, of Martin, TN, Aug. 16, age 83.  
**John J. Peoples**, '68, of Springfield, PA, Mar. 22, age 76.  
**John H. Remke**, '68, of Orlando, FL, Nov. 15, age 69.  
**Ronald C. Roat**, '68, of Ludington, Nov. 28, age 67.  
**Mary H. Roush**, '68, of Lansing, Apr. 6, age 82.  
**Norman E. Sugarman**, '68, of Philadelphia, PA.  
**Donna L. (Hunter) Westra**, '68, of Grand Haven, Nov. 10, age 67.  
**V. Bruce Whitehead**, '68, of Rocky Mount, NC, Apr. 7, age 66.  
**George E. Arko**, '69, of Trenton, Dec. 7, age 73.  
**Dixie L. (Nichols) Arneal**, '69, of Orange, CA, Jan. 29, age 75.  
**Robert C. Davis**, '69, of Laguna Beach, CA, Feb. 27, age 66.  
**Duane E. DePue**, '69, of Roseville, May 20, age 66.  
**Priscilla L. Dunkel**, '69, of Dallas, TX, Nov. 11, age 67.  
**Robert D. Englander**, '69, of Earling, IA, Feb. 16, age 68.  
**Arselia M. (Block) Ensign**, '69, of Lansing, Nov. 30, age 94.  
**John J. Forte**, '69, of Okemos, Nov. 19, age 70.  
**Mary J. Gelhaus**, '69, of Walnut Creek, CA, Mar. 17, age 67.  
**Gabrielle Henning**, '69, of Nazareth, Jan. 26, age 99.  
**C. Robert Linne**, '69, of Petoskey, Nov. 2, age 69.  
**Susan (Liston) Mowery**, '69, of Lancaster, PA, Sep. 20, age 67.  
**Ann M. (Hunemorder) Moore**, '69, of Traverse City, Jul. 17, age 66.  
**Paul A. Orlov**, '69, of Berwyn, PA, Apr. 8, age 66.  
**Nancy O. Reed**, '69, of East Lansing, Nov. 9, age 66.  
**Robert J. Schulz**, '69, of Mount Morris, Mar. 6, age 67.  
**Cecile Pratt Wiegand**, '69, of Traverse City, Mar. 13, age 66.  
**Donald A. Williams**, '69, of

Lansing, Mar. 18, age 68.

## '70s

**Frederick A. Belinsky**, '70, of La Jolla, CA, Mar. 30, age 65.  
**Kenneth P. Bosman**, '70, of Holland, Jun. 27, age 83.  
**Laurie J. Botsford**, '70, of Middletown, OH, Feb. 7, age 65.  
**Larry A. Bowie-Forth**, '70, of Calumet, Dec. 12, age 67.  
**Burton C. Cebulski**, '70, of Negaunee, Oct. 29, age 67.  
**Gary O. Goodemoot**, '70, of Gladwin, Jan. 30, age 70.  
**Philip N. Grebel**, '70, of Lake City, FL, Aug. 19, age 85.  
**Richard I. Hendra**, '70, of Parma, Nov. 5, age 77.  
**James K. Hill**, '70, of Essexville, Apr. 16, age 72.  
**Andrew T. Jefchak**, '70, of Caledonia, Feb. 19, age 78.  
**Stephen J. Johnson**, '70, of Plainfield, IN, Mar. 2, age 66.  
**John M. Pankey**, '70, of Petoskey, May 7, age 64.  
**Philip E. Poukish**, '70, of Yuba City, CA, Feb. 28, age 79.  
**Leslie C. Ravitz**, '70, of New York, NY.  
**Kay A. Schlappé**, '70, of Clarion, PA, Mar. 10, age 70.  
**James H. Shaddy**, '70, of Ozark, MO, Feb. 20, age 75.  
**Daniel G. Soza**, '70, of Saginaw, Mar. 3, age 66.  
**Roland G. Stanley**, '70, of Kalamazoo, Oct. 29, age 83.  
**Daniel M. Wegner**, '70, of Winchester, MA, Jul. 5, age 65.  
**Richard J. Williams**, '70, of Towson, MD, Oct. 19, age 84.  
**Carl Bjarnason**, '71, of Canada, Jan. 30, age 98.  
**Priscilla G. (Henry) Fosse**, '71, of Grand Ledge, Mar. 31, age 64.  
**James C. Gent**, '71, of Haslett, Apr. 11, age 69.  
**Laurie S. Goldstein**, '71, of Soquel, CA, Mar. 25, age 69.  
**Judith K. (Greene) Haines**, '71,



of Waterford, Mar. 17, age 65.  
*Gail Henderson*, '71, of Edgewater, MD, Nov. 16, age 69.  
*David R. Hicks*, '71, of Seminole, FL, Nov. 23, age 70.  
*Leslie G. Lucas*, '71, of Detroit.  
*William S. Miller*, '71, of Virginia Beach, VA, Feb. 6, age 69.  
*Innaiah Pothacamury*, '71, of East Lansing, Mar. 9, age 72.  
*Roderick D. Riggs*, '71, of Jackson, Dec. 5, age 82.  
*Linda M. Robinson*, '71, of Albion, Jan. 29, age 64.  
*John W. Sargent*, '71, of Rochester, NY, Apr. 8, age 74.  
*Paul H. Smith*, '71, of Liverpool, NY.  
*Nancy C. Timmerman*, '71, of Winter Park, FL, Mar. 4, age 64.  
*Carolyn L. (Fruechtel) Van Cise*, '71, of Royal Oak, Mar. 31, age 64.  
*Lois (McPhee) Wright*, '71, of Flint, Dec. 4, age 88.  
*Stephen W. Wright*, '71, of Stevensville, Mar. 13, age 70.  
*Marie S. Bennett*, '72, of Lansing, Dec. 18, age 81.  
*Mary D. Bird-Parks*, '72, of Birmingham, Feb. 1, age 63.  
*Larry A. Estlack*, '72, of Lansing, Dec. 16, age 64.  
*Lyn E. Johnson*, '72, of Petoskey, Jan. 6, age 65.  
*Vorma J. Johnson*, '72, of Lansing, Nov. 17, age 77.  
*Robert L. Kinziger*, '72, of Rockford, Dec. 2, age 65.  
*Charles A. Ladley*, '72, of Vacaville, CA, Sep. 30, age 81.  
*Gayle A. (Hannula) Michener*, '72, of Plymouth, Jul. 23, age 62.  
*Jerome Sikorski*, '72, of Flushing, Nov. 24, age 67.  
*Paul A. Villaire*, '72, of Ann Arbor, Oct. 27, age 67.  
*Connie J. Baird*, '73, of Hemlock, Sep. 16, age 62.  
*Leo E. DeFrain*, '73, of Lansing, Mar. 11, age 77.  
*Michael L. Flynn*, '73, of Sault Ste. Marie, Apr. 8, age 62.  
*Arthur E. Goyeau*, '73, of West

Bloomfield, Aug. 6, age 68.  
*Michael B. Handlin*, '73, of Grand Rapids, Oct. 5, age 70.  
*Leota J. Hunt*, '73, of Williamston, Sep. 25, age 82.  
*Judith E. James*, '73, of Rives Junction, Oct. 23, age 76.  
*Elmer S. Junker*, '73, of Grand Rapids, Dec. 10, age 90.  
*Jeremy F. Lewis*, '73, of Montague, Dec. 5, age 64.  
*Marilee G. (Turner) Miller*, '73, of Memphis, TN, Nov. 26, age 62.  
*Robert J. Murphy*, '73, of South Bend, IN, Feb. 8, age 62.  
*Alexander T. Ornstein*, '73, of Southfield, May 14.  
*Nancy R. (Johnson) Porter*, '73, of Grand Rapids, Nov. 13, age 78.  
*Philip H. Sheridan*, '73, of Kensington, MD, Nov. 3, age 80.  
*Roger L. Smith*, '73, of Lake Placid, FL, Jul. 16, age 66.  
*Ronald J. Ticchi*, '73, of Toledo, OH, Feb. 26, age 62.  
*John E. Budnik*, '74, of Washington, DC, Oct. 27, age 66.  
*Irwin D. Gravlin*, '74, of Sanford, Sep. 23, age 73.  
*Robert A. Haan*, '74, of Columbia City, OR, Dec. 4, age 72.  
*Margie E. Pannell*, '74, of Saint Joseph, Oct. 25, age 75.  
*Vincent J. Slupecki*, '74, of Tampa, FL, Jul. 16, age 61.  
*Stanley A. Smith*, '74, of Detroit, Dec. 22, age 74.  
*Ronald G. Storey*, '74, of Canada, Feb. 19, age 74.  
*Catherine L. Cook*, '75, of Tecumseh, Nov. 29, age 60.  
*Douglas J. Lindsay*, '75, of Waterford, Apr. 8, age 60.  
*Richard N. McCarty*, '75, of Groveport, OH, Mar. 9, age 77.  
*Michael K. Modin*, '75, of Richmond, Dec. 16, age 60.  
*Timothy R. Brown*, '76, of Southfield.  
*Beverly R. (Sutley) David*, '76, of Royal Oak.  
*Mark W. Fish*, '76, of Holt, Mar. 15, age 60.  
*James L. Rumora*, '76, of

Portage, Dec. 27, age 59.  
*Victor W. Swiderski*, '76, of St. Ignace, Mar. 20, age 62.  
*Katherine M. Allen*, '77, of Virginia Beach, VA, Mar. 29, age 62.  
*A. George Best*, '77, of Saginaw, Apr. 13.  
*Janice Bussler*, '77, of Kalamazoo, Mar. 9, age 80.  
*Richard A. Eckhart*, '77, of Sugar Land, TX, Oct. 25, age 58.  
*Leonard O. Gardenour*, '77, of New Albany, IN, Apr. 19, age 62.  
*Karen L. Hornberger*, '77, of Houston, TX, Mar. 15, age 58.  
*Lowell T. Jacobson*, '77, of Las Vegas, NV, Dec. 6, age 78.  
*Charles H. Koop*, '77, of Williamsburg, Aug. 6.  
*Gregory A. Savoie*, '77, of Flint, Feb. 20, age 59.  
*Keith K. Spangler*, '77, of Flint, Nov. 5, age 66.  
*Joseph M. Folk*, '78, of Los Angeles, CA, Nov. 25, age 58.  
*Betty F. Hooker*, '78, of Kalamazoo, Nov. 12, age 93.  
*Phyllis A. Koegel*, '78, of Sun City, AZ, Dec. 5, age 58.  
*Holly J. (Closson) Lumley*, '78, of Manistee, Feb. 6, age 58.  
*Phillip M. Mann*, '78, of Indianapolis, IN, Jun. 13, age 80.  
*Valoria (Jeffries) Mosley*, '78, of Lansing.  
*Victor J. VanderRoest*, '78, of Sturgis, Feb. 20, age 63.  
*George S. Denny*, '79, of Wichita, KS, Jun. 13, age 55.  
*Cheryl Lynn (Cotman) Graham*, '79, of Williamston, Feb. 14, age 57.  
*Jane E. Hodgson*, '79, of Port Angeles, WA, Jan. 9, age 80.  
*Mark D. Johnson*, '79, of Albuquerque, NM, Feb. 19, age 56.  
*Diane E. (Smith) LeBar*, '79, of Trenton, Apr. 3, age 57.  
*Jerry F. Ludwig*, '79, of Jackson, Dec. 15, age 63.  
*Gnani R. (Prasid) Moses*, '79, of

Lincoln, NE, Oct. 30, age 70.  
*Donald J. Tobias*, '79, of Syracuse, NY, Nov. 22, age 68.

## '80s

*Marcus H. Berman*, '80.  
*Judith Bottiggi*, '80, of Swampscott, MA, Jun. 15, age 71.  
*Linda J. Klump*, '80, of Hoffman Estates, IL, Jan. 16, age 55.  
*Kimberly A. Meiners Riley*, '80, of Milford, Feb. 7, age 55.  
*Robert F. Simons*, '80, of Roanoke, VA, Sep. 16, age 57.  
*Daniel J. Adams*, '81, of Saginaw, Jul. 4, age 58.  
*John D. Madigan*, '81, of Warren, Nov. 2, age 70.  
*Stephen C. Moultrup*, '81, of Waterford, Feb. 23, age 59.  
*Frances L. (Hillier) Pletz*, '81, of Libertyville, IL, Dec. 3, age 93.  
*Robert L. Price*, '81, of Oscoda, Mar. 19, age 67.  
*Stacia (McKnight) Scarborough*, '81, of Mason, Apr. 5, age 65.  
*Andy A. Catey*, '82, of Reading, Jul. 6, age 58.  
*Stephen G. Donovan*, '82, of Fraser, Jul. 1.  
*Robert L. Soderman*, '82, of Jupiter, FL, Nov. 26, age 78.  
*Michael R. Yurkovich*, '82, of North Royalton, OH, May 27, age 53.  
*Jane L. Miller*, '83, of Telluride, CO, Dec. 22, age 53.  
*Kevin J. Poirier*, '83, of Rochester, MN, Dec. 9, age 53.  
*Frank L. Archer*, '84, of Muskegon, Dec. 1, age 53.  
*Randall W. Grimes*, '84, of Thurmont, MD, Aug. 11, age 55.  
*Ivy M. (McCulloch) Warsinski*, '84, of Sun City West, AZ, Nov. 29, age 68.  
*S. Rietje Zeevaart*, '84, of Hummelstown, PA, Nov. 7, age 78.  
*Ralph A. Kohn*, '85, of Flint, Mar. 2, age 70.  
*Aidas V. Kriauciunas*, '85, of Indianapolis, IN, Mar. 5, age 50.  
*Stephen V. Shepich*, '85, of



Lansing, Oct. 24, age 65.  
**Imelda A. Abr**, '86, of York, PA, Sep. 30, age 69.  
**Michael R. Link**, '86, of Saginaw, Nov. 7, age 56.  
**Joel E. Platte**, '86, of Pewamo, Mar. 8, age 50.  
**Mark G. Tagett**, '86, of Portage, Dec. 12, age 55.  
**Carole F. (Chielens) Youngblood**, '86, of Grosse Pointe, Feb. 12.  
**Dirk W. Craft**, '87, of Agoura Hills, CA, Mar. 24, age 48.  
**Jeffrey A. Nardone**, '87, of Taylor, Nov. 4, age 48.  
**Craig E. Stitz**, '88, of Walled Lake, Feb. 18, age 47.  
**Michael S. Meloth**, '89, of Greenville, NC, Nov. 15, age 57.  
**Brett J. Nevins**, '89, of Camdenton, MO, Oct. 28, age 50.

## '90s

**Patrick M. Phillips**, '90, of Littleton, CO, Oct. 25, age 47.  
**Stephen E. Hart**, '92, of East Brunswick, NJ, Feb. 18, age 49.  
**Juan A. Macias**, '92, of Lansing, Mar. 22, age 43.  
**Scott A. Madden**, '93, of South Deerfield, MA, Feb. 14, age 45.  
**Patrick B. Treloar**, '93, of Eaton Rapids, Jan. 11, age 48.  
**Katherine E. Winslow**, '95, of Lansing, Dec. 5, age 40.  
**Edward P. Chan**, '96, of Okemos, Apr. 2, age 40.

## '00s

**James J. Bradford**, '00, of Carmel, IN, Oct. 5, age 49.  
**Kwang W. Cho**, '01, of East Lansing.  
**Lucas C. Shelton**, '02, of Saint Johns, Dec. 3, age 34.  
**Mary A. Van Camp**, '04, of Grosse Pointe, Nov. 26, age 31.  
**Annabelle Kong**, '07, of East Lansing.  
**Xaviar Figueras**, '08, of Lansing, Jan. 12, age 56.  
**Matthew L. Schumann**, '08, of Dearborn, Aug. 6, age 27.

## '10s

**Shannon M. Elliott**, '11, of Oxford, Oct. 30, age 24.  
**Benjamin C. Harning**, '11, of Allen Park, Nov. 9, age 24.

## FACULTY & STAFF

**Joseph Evans**, '35, of San Diego, CA, Jan. 24.  
**Betty R. (McDonald) Leiby**, '47, of Clearwater, FL, Mar. 7, age 89.  
**Robert H. Davis**, '48, of Okemos, Dec. 1.  
**Charles F. Doane**, '48, of East Lansing, Dec. 2, age 88.  
**Clare M. Musgrove**, '49, of Minneapolis, MN, Apr. 6, age 94.  
**Mary E. (Lynch) Blake**, '51, of Traverse City, Feb. 3, age 84.  
**Rexford E. Carrow**, '53, of Lansing, Apr. 1, age 87.  
**Barbara E. (Thrun) Mestemaker**, '58, of East Lansing, Feb. 28, age 77.  
**Beth G. (Goldsmith) Zinman**, '77, of East Lansing, Feb. 14, age 69.  
**Nicole R. Alderman**, of Holt, Mar. 21, age 51.  
**Lawrence T. Alexander**, of East Lansing, Nov. 7, age 91.  
**Harold Capen**, of Lansing, Mar. 9.  
**Theodore R. Chavis**, of East Lansing, Nov. 7, age 91.  
**Aureal T. Cross**, of East Lansing, Dec. 1, age 97.  
**Sylvia Depottyondy**, of East Lansing, Feb. 25, age 94.  
**G. Bruce Fossum**, of Okemos, Mar. 12, age 86.  
**Billie D. Gamble**, of Haslett, Apr. 5, age 77.  
**Perry E. Lanier**, of East Lansing, Jan. 31, age 80.  
**Leslie L. Lemieux**, of East Lansing, Nov. 12, age 87.  
**Matthew A. Medick**, of East Lansing, Jan. 31, age 87.  
**George E. Merva**, of East Lansing, Oct. 30, age 81.  
**Robert W. Messner**, of East Lansing, Nov. 13, age 87.  
**Debra M. (Austin) Moray**, of Lansing, Feb. 8, age 65.

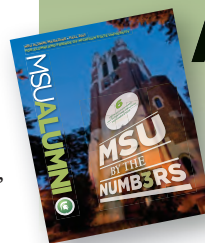
**Mary L. Murphy**, of Williamston, Nov. 20.  
**Eileen Nortman**, of Lansing, Feb. 19, age 88.  
**Laurel L. Phinney**, of Laingsburg, Mar. 11, age 70.  
**Pamela A. (Fuller) Pope**, of Lansing, Feb. 4, age 65.  
**David C. Ralph**, of Lansing, Nov. 6, age 91.  
**Sylvia J. Ross**, of Saint Johns, Nov. 6, age 72.  
**Joan H. Schroeder**, of East Lansing, Feb. 18, age 74.  
**Shirleyetta (Silverman) Sernick**, of Lansing, Mar. 9, age 78.

**Henry J. Silverman**, of Sarasota, FL, Nov. 27, age 79.  
**Norman R. Stewart**, of East Lansing, Nov. 29, age 82.



MSU was notified of these deaths between February 1 and April 30, 2014.

Send obituaries to:  
 MSU Alumni Magazine - Obits  
 Spartan Way  
 535 Chestnut Rd., Room 300  
 East Lansing, MI 48824  
 Or email: [records@uadv.msu.edu](mailto:records@uadv.msu.edu)



## Are You Moving?

Be sure to take your MSU Alumni Magazine along with you.

Email us at:  
[msuaa@alumni.msu.edu](mailto:msuaa@alumni.msu.edu)

Some things shouldn't be forgotten.

**The Attic**  
 Genealogy Research

(303)841-7092 • [theAtticGenealogy.com](http://theAtticGenealogy.com)



## Sparrow Spartan Spotlight



MICHIGAN STATE  
UNIVERSITY

# Spartans show their support during Magnet preparation

Suzy Merchant, Sparty, Michigan State University Pompon and other Spartans helped Sparrow Nurses prepare for an important site visit this spring.

The site visit was held April 28-30 when appraisers representing the American Nurses Credentialing Center visited Sparrow as part of our Magnet Recognition re-designation process.

Magnet Recognition is the nation's most prestigious honor for nursing achievement and excellence. Sparrow is proud to be among the 6% of hospitals nationwide to receive Magnet recognition and is currently seeking Magnet redesignation.

To get fired up for the site visit, Nurses held a huge pep rally and invited

friends from MSU. Sparrow Nurses are known for the quality, compassionate care they provide each day – but they showed they are also great at throwing a pep rally!

Sparty was a big hit, along with Merchant, MSU women's basketball head coach, who spoke about the impact Sparrow Nurses have made on her life and her team. With the help of MSU Pompon, Nurses also formed a cheer squad and performed a special Sparrow cheer.

Sparrow's more than 2,000 Nurses are our most visible example of our dedication to quality, compassionate



care. Magnet Designation means Sparrow Hospital is a recognized leader in quality Patient care, nursing excellence and innovative professional nursing practices.

THE MICHIGAN STATE UNIVERSITY  
ALUMNI ASSOCIATION PRESENTS

# ALUMNI LENS

LIFELONG ENRICHMENT FOR SPARTANS



The MSU Alumni Association is proud to introduce the Alumni LENS, formerly the Evening College. With hundreds of in-person and online offerings, alumni and friends of all ages, interests and locations are sure to find an opportunity for enrichment.

Visit **[alumni.msu.edu/lens](http://alumni.msu.edu/lens)** for a variety of offerings and registration information.

## [alumni.msu.edu/lens](http://alumni.msu.edu/lens)





## SPARTANS ARE EVERYWHERE

### MSUAA's Enrichment Opportunities Are Too

Introducing Alumni Professional and Personal Enrichment, a marriage of Alumni Lifelong Education and Alumni Career Services that uses a combination of technology, online learning and in-person offerings to bring a wide variety of enrichment opportunities to Spartans of all ages, interests and locations. Connect with us today to learn, grow and experience the best of Spartan Nation.

ALUMNI LENS PROGRAM  
[alumni.msu.edu/lens](http://alumni.msu.edu/lens)

PROFESSIONAL SERIES WEBINARS  
[alumni.msu.edu/professionalseries](http://alumni.msu.edu/professionalseries)

MICHIGAN STATE  
UNIVERSITY

Alumni Association

[alumni.msu.edu](http://alumni.msu.edu)



## LERN Online

### Certificate Programming

The MSU Alumni Association has partnered with The Learning Resources Network (LERN), an international association specializing in lifelong learning, to provide online certificate programming right at your fingertips.

Get additional information and register for courses by visiting [alumni.msu.edu/lens](http://alumni.msu.edu/lens) and clicking on "Online Offerings."

MICHIGAN STATE  
UNIVERSITY

Alumni Association



## Completely Customizable

- Phone Cases
- Name Badges
- Coffee Mugs
- Awards
- Car Flags
- Frames
- Key Chains
- Coasters
- Mouse Pads
- Travel Mugs
- Can Coolies
- Luggage Tags

## & So Much More!

**CEP**

Custom Embroidery  
— Plus —  
screenprinting



## 2 Locations & Many Ways to Serve You!

- Onsite Embroidery
- Onsite Screenprinting
- Onsite Sublimation
- Custom Artwork & Digitizing
- Promotional Products
- Scrubs & Carhartts
- MSU® Licensed



**www.CEPlusonline.com**

Ph. (989) 227-9338 / Fax (989) 227-2631  
304 N. Lansing St. St. Johns, MI 48879

Ph. (517) 993-5637  
420 E. Saginaw Hwy Ste:109 Lansing, MI 48906

**MICHIGAN STATE  
UNIVERSITY  
ALUMNI ASSOCIATION**

**You earned it,  
now frame it!™**

In partnership with *Church Hill Classics*



**Diploma Frames  
from \$109 - \$239**



**Desk Accessories  
and Photo Frame  
from \$29 - \$89**

*The Perfect  
Graduation Gift!*



A portion of the proceeds from this  
official fundraiser directly supports the  
Michigan State University Alumni Association.



**Design Your Frame™  
Online!**

To order or customize, visit  
**www.michiganstateframes.com**

**800-477-9005**





# MANDOKA NATIVE CRAFTS

Mandoka Native Crafts creates custom made acrylic displays that are lit by LED technology. These displays can be highly personalized for an award, mark of achievement or otherwise show your pride in Michigan State University.

The displays are 12" x 12" in size with a solid oak base. Larger displays, completely framed in solid oak up to 32" x 18" can be ordered. Bases are handmade and hand finished. LEDs come in either solid green or multi-colored. The multi-color LEDs come with an additional IR remote control. The acrylic used is either clear or translucent green.

Large hanging displays for garages or shops are also available. Please see Mandoka Native Crafts on Facebook for more samples



Edges can be flame polished for a near glass-like look.

Prices range from \$100.00-350.00\*

Please contact Mike or Chris for ordering  
(269) 729-4185 or (269) 589-9818  
[cmandoka@sbcglobal.net](mailto:cmandoka@sbcglobal.net)

Mandoka Native Crafts is Native American owned, operated and based on the Pine Creek Indian Reservation outside Athens Michigan. All trademarks of the University are used under license.  
\*pricing excludes tax, shipping and handling.

## MICHIGAN STATE 100th ROSE BOWL® CHAMPS GEAR

EVERY PURCHASE SUPPORTS THE MICHIGAN STATE ALUMNI ASSOCIATION

ONLY AT [MichiganStateChampsGear.com](http://MichiganStateChampsGear.com) or 1-800-260-9923



Get this beautiful collectible scarf, hat and tee, commemorating the Spartans victory in Pasadena at the Rose Bowl, on January 1, 2014. These are the "Champions" versions of the original Michigan State Spartans Football Scarf and Hats sold only in Pasadena and Los Angeles, for the 100th Rose Bowl Game. We've recreated the scarf with a Champions design.

Buy all three, and get 10% off!  
Go Green !!



MICHIGAN STATE  
UNIVERSITY

Additional  
Rose Bowl®  
Apparel  
Also Available.

Alumni Association



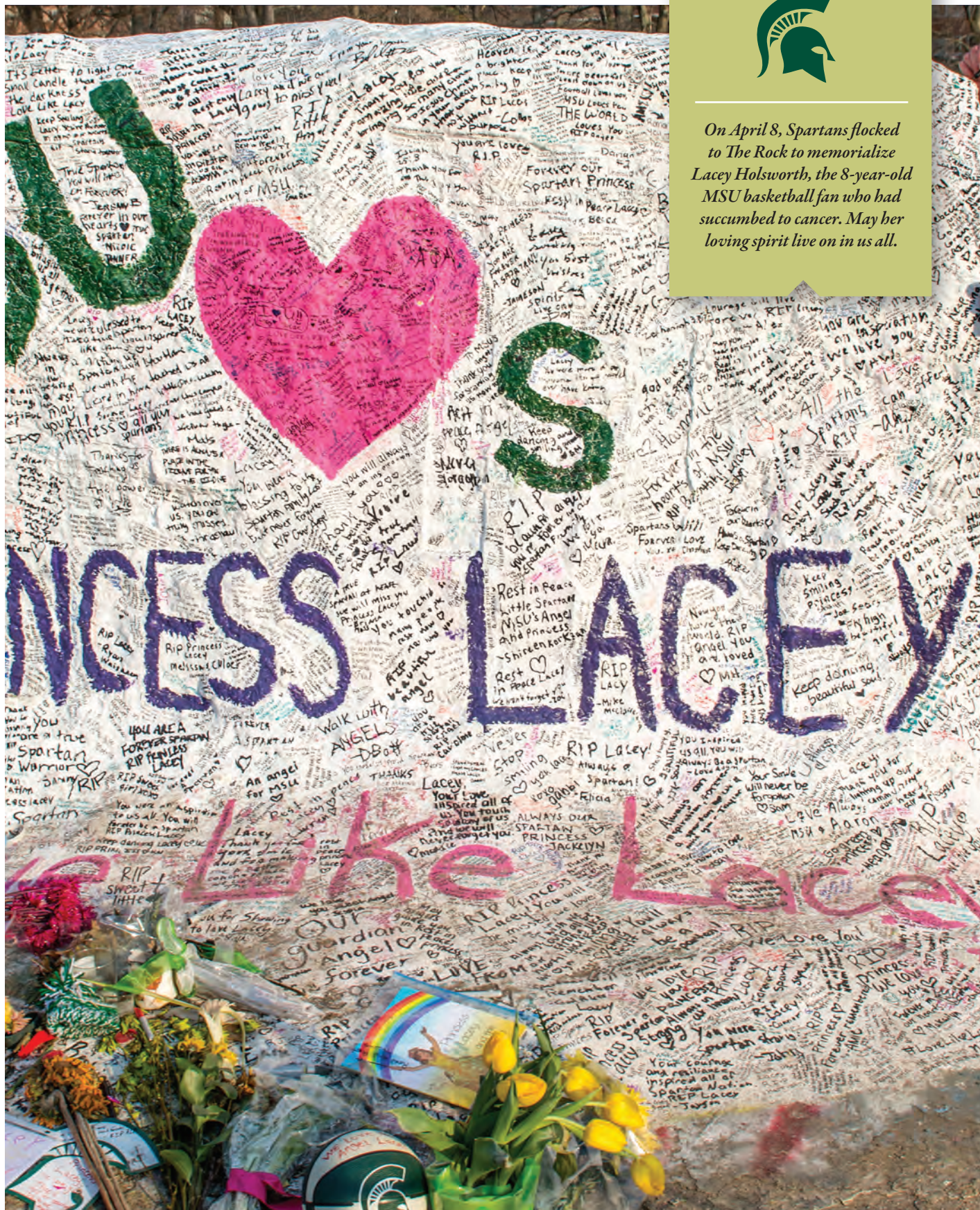




## LASTING IMPRESSIONS



*On April 8, Spartans flocked to The Rock to memorialize Lacey Holsworth, the 8-year-old MSU basketball fan who had succumbed to cancer. May her loving spirit live on in us all.*



Derrick Turner/Communications & Brand Strategy